

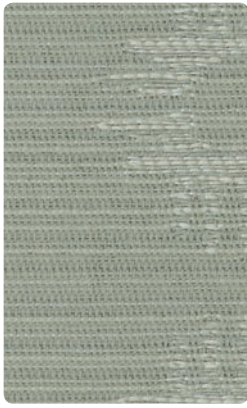


Celebrating the Revival of American Manufacturing.



American Craft Collection >>

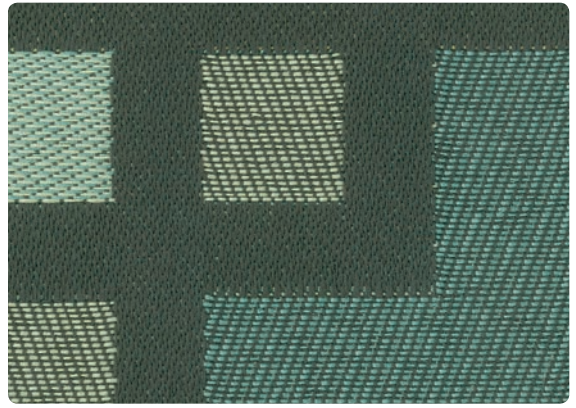
COVERLET
DRAFT
FRAMEWORK
HOPSACK
REPP
TREADLE



COVERLET
Silverware



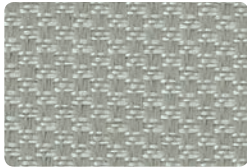
FRAMEWORK
Chiffon



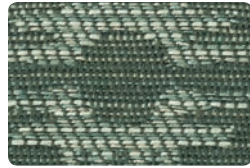
DRAFT
Nordic Sky



REPP
High Desert



HOPSACK
Cloud



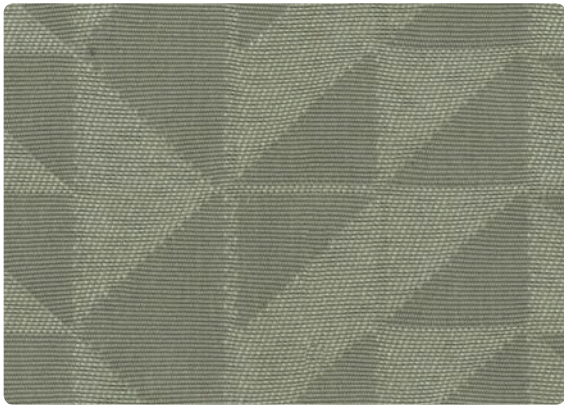
COVERLET
Greycourt



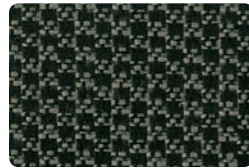
TREADLE
Soft Grey



HOPSACK
Toast



FRAMEWORK
Nickel



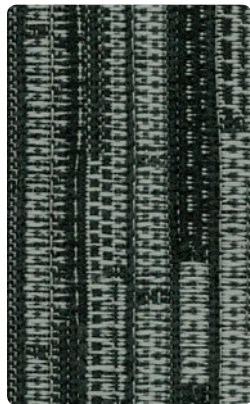
HOPSACK
Charcoal



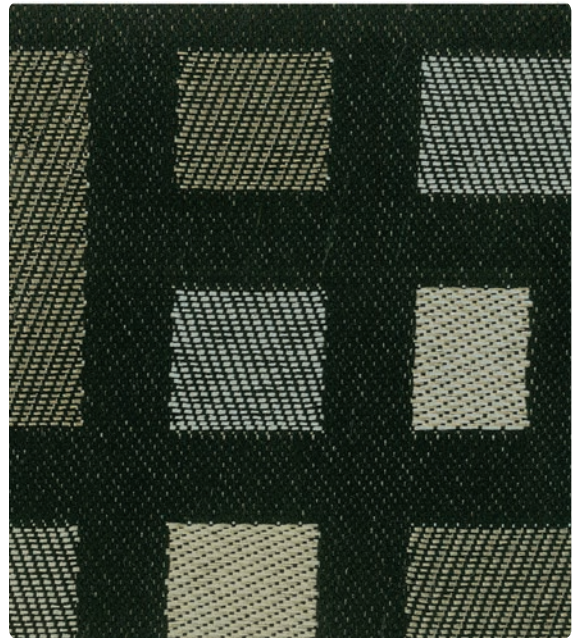
REPP
Dark Taupe



HOPSACK
Winter



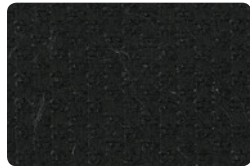
REPP
New Moon



DRAFT
Roadway



TREADLE
Newsprint



HOPSACK
Black



FRAMEWORK
Almost Black



HOPSACK
Lemon



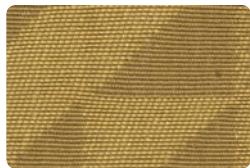
TREADLE
School Bus



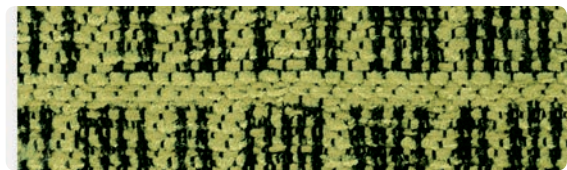
DRAFT
Beer



REPP
Straw



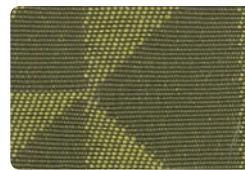
FRAMEWORK
Dubloon



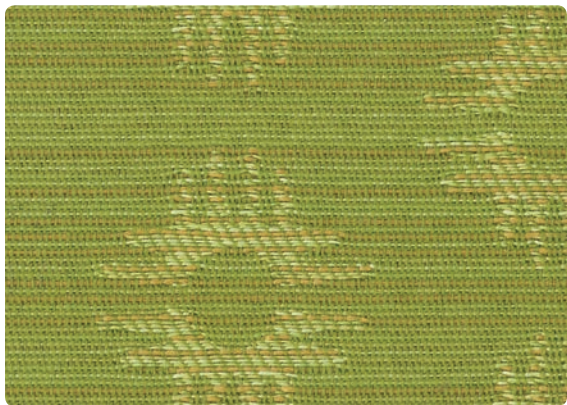
TREADLE
Celery



REPP
Spring Green



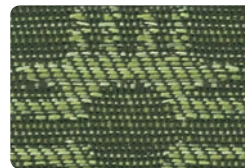
FRAMEWORK
Camo Green



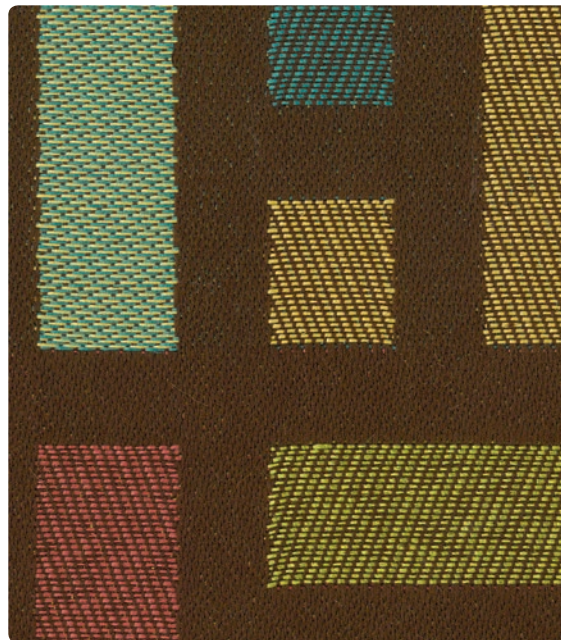
COVERLET
Sprout



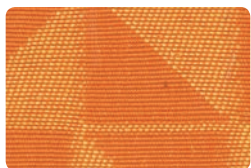
HOPSACK
Moss



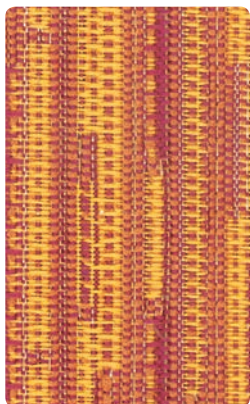
COVERLET
Old Moss



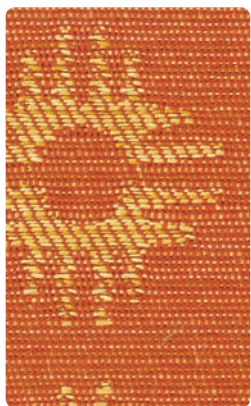
DRAFT
Coffee House



FRAMEWORK
Orange



REPP
Sunrise



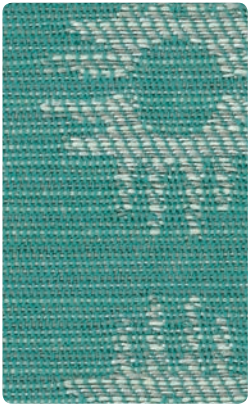
COVERLET
Marigold



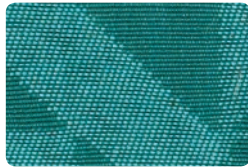
HOPSACK
Orangina



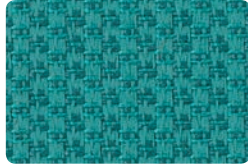
FRAMEWORK
Rosey



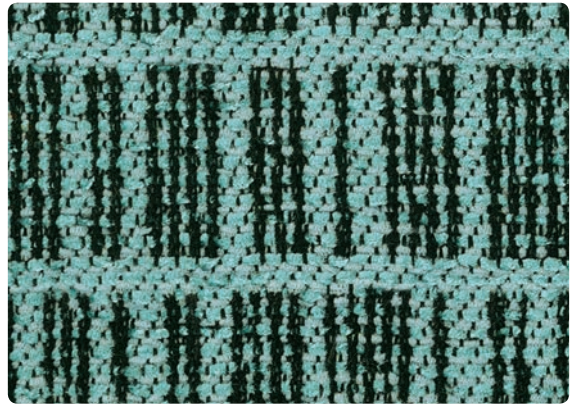
COVERLET
Bird Shell



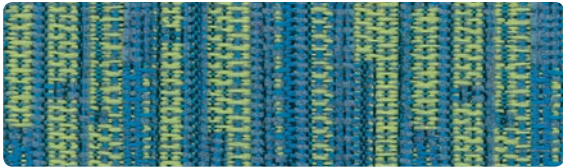
FRAMEWORK
Taos Teal



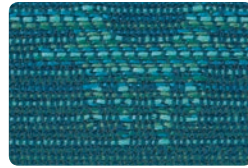
HOPSACK
Teal



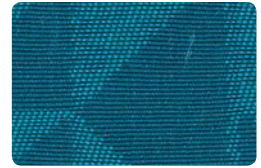
TREADLE
Aqua



REPP
Tropicale



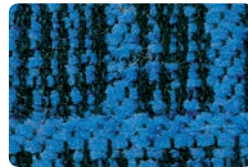
COVERLET
Ocean Blue



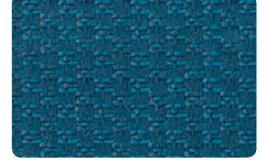
FRAMEWORK
Coastal Blue



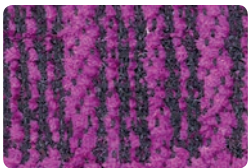
FRAMEWORK
Fuchsia



TREADLE
Electric Blue



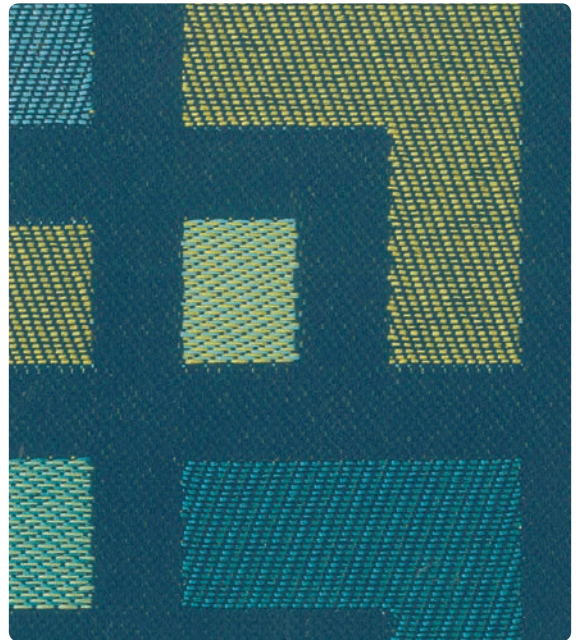
HOPSACK
Ensign Blue



TREADLE
Hot Pink



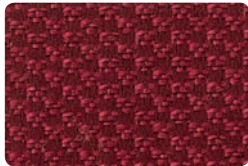
REPP
Corsage



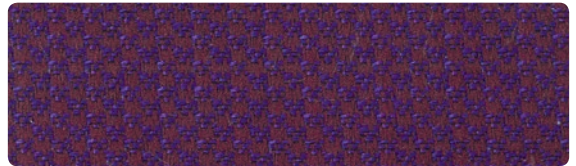
DRAFT
Cool Blue



COVERLET
Plum



HOPSACK
Cherry



HOPSACK
Grape

TECHNICAL INFORMATION

Pattern/Direction Width: 54"	Fiber	Repeat	Backing Finish	Weight (per yard)	Cleaning Code	Abrasion ASTM 4157 (Double Rubs)	Lightfastness AATCC 16E	Seam Slippage* ASTM-D-4034
Coverlet® (Up the roll)	100% Polyester	3-3/8" H 4" V	Acrylic with Teflon®	13.8 oz.	WS	50,000 (Cotton Duck)	60 hours Class 5	Warp - 75 lbs Fill - 74 lbs
Draft® (Up the roll)	100% Polyester	9-3/8" H 9-7/8" V	Acrylic with Teflon®	13.5 oz.	WS	50,000 (Cotton Duck)	60 hours Class 5	Warp - 64 lbs Fill - 65 lbs
Framework® (Up the roll)	100% Polyester	5-11/16" H 3-1/8" V	Acrylic with Teflon®	10.7 oz.	WS	50,000 (Cotton Duck)	60 Hours Class 5	Warp - 49 lbs Fill - 89 lbs
Hopsack (Up the roll)	100% Polyester	3/16" H 3/16" V	Acrylic with Teflon®	14.7 oz.	WS	50,000 (Cotton Duck)	60 Hours Class 5	Warp - 77 lbs Fill - 65 lbs
Repp® (Up the roll)	100% Polyester	2-7/8" H 2-1/8" V	Acrylic with Teflon®	15.0 oz.	WS	75,000 (Cotton Duck)	60 Hours Class 5	Warp - 90 lbs Fill - 85 lbs
Treadle® (Up the roll)	100% Polyester	3-5/16" H 4-1/8" V	Acrylic with Teflon®	16.0 oz.	WS	50,000 (Cotton Duck)	60 Hours Class 5	Warp - 75 lbs Fill - 90 lbs

Cleaning Instructions: WS - For water based stains, use mild detergent foam or upholstery shampoo. For oil based stains, spot clean with a dry cleaning solvent being sure to test area first.

Flame Resistance: California Technical Bulletin 117-2013; NFPA 260

Fabrics by Absecon Mills, Inc. Fabric performance symbols indicate that a fabric performs to commercial furniture manufacturing standards and passes all applicable testing as specified by the Association for Contract Textiles (ACT).

05/2018 | For additional cards or memo samples:
email samples@absecon.com or call 1-877-356-4557



Absecon Mills is focused on being a responsible corporate entity and we are continually striving to find ways to help preserve our environment, increase energy efficiency and reduce waste. Our mode of manufacturing is specifically designed to prevent damage to the environment. Our products are woven using wind power and many are constructed with polypropylene (a by-product of gasoline manufacturing, utilizing post-industrial waste) and recycled polyester, which helps keep post-consumer waste in the material stream and out of landfills. Absecon offers finishes that use ten times less fluorocarbons than conventional finishes and are SCS Indoor Advantage Gold certified. We participate in a fabric recycling program and work hard to lessen our footprint on the environment. For more information on our green initiatives, please visit www.absecon.com



WOVEN WITH
WIND POWER

Colors may vary slightly from dye lot to dye lot.

*ASTM-D-4034: Seam 12mm from edge using 7 stitches per 25mm (1"), plain lock stitch and a 22 ballpoint needle)

