

A & D Style

Fabric Collections From Absecon Mills & Douglass Industries

GreenPiece™ 
Eco Inspired Fabric Collections



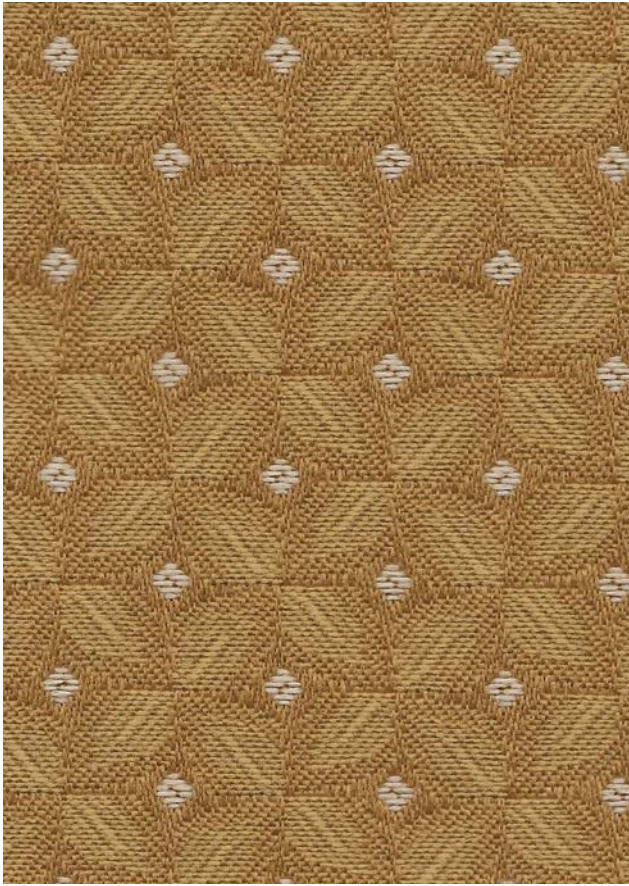
Cantara »»

BLISS

DOVETAIL

KUDOS

MANDALAY



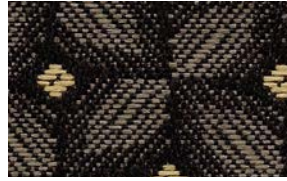
Mandalay[®] PEANUT



MARINA



PERSIMMON



WILDCAT



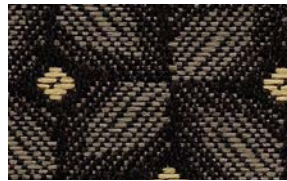
BORDEAUX



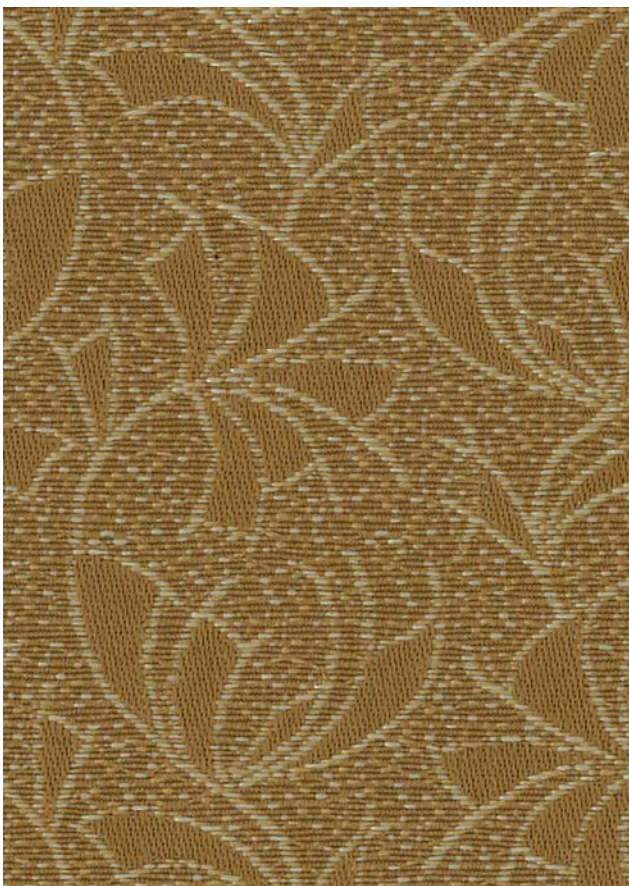
BLACKSMITH



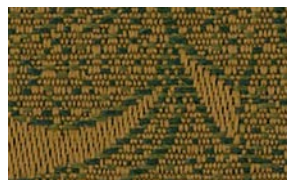
ENGLISH PINE



WINTER GARDEN



Bliss[®] GOBI BEIGE



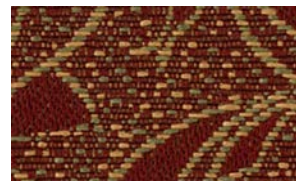
BRONZE



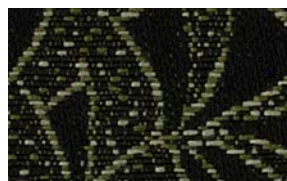
MAPLE



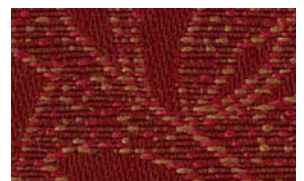
STONEWORK



AZTEC RED



GREEN TREE



RED PEPPER



CONFEDERATE BLUE



Kudos[®] FRONTIER



MANGO



CAPER



TUMBLEWEED



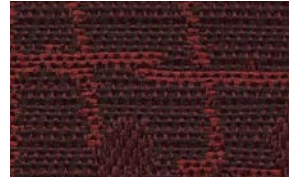
CYPRESS



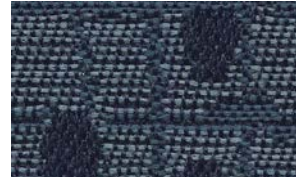
AUTUMN



LAVA ROCK



MAROON



NAVY



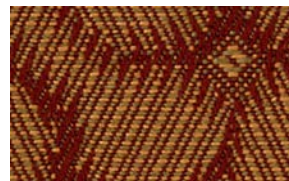
Dovetail[®] CHIPMUNK



BEIGE



GOLDEN RAY



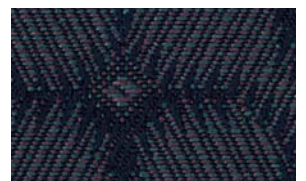
ANTIQUÉ GOLD



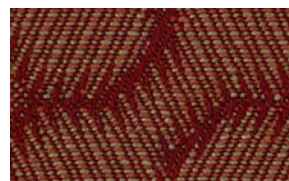
GREYSTONE



SUNSET



IMPERIAL BLUE



SIENNA




LODEN

TECHNICAL INFORMATION

Pattern/Direction	Fiber	Repeat	Backing	Weight (per yard)	Cleaning Code	Abrasion ASTM 4157 (Double Rubs)	Lightfastness AATCC 16E	Seam Slippage ASTM-D-4034
Bliss (Up the roll)	100% Polyester	3-1/2" H 3-7/8" V	Acrylic	13.5 oz.	WS	100,000 (Cotton Duck)	40 Hours Class 5	Warp - 99 lbs Fill - 99 lbs
Dovetail (Up the roll)	100% Polyester	1-3/4" H 3-1/4" V	Acrylic	14.5 oz.	WS	75,000 (Cotton Duck)	40 Hours Class 4.5	Warp - 99 lbs Fill - 89 lbs
Kudos (Railroaded)	100% Polyester	6-7/8" H 9-7/8" V	Acrylic	15.0 oz.	WS	70,000 (Cotton Duck)	40 Hours Class 5	Warp - 99 lbs Fill - 99 lbs
Mandalay (Up the roll)	100% Polyester	1-13/16" H 1-1/16" V	Acrylic	15.0 oz.	WS	65,000 (Cotton Duck)	40 Hours Class 5	Warp - 99 lbs Fill - 99 lbs

Cleaning Instructions: WS - For water based stains, use mild detergent foam or upholstery shampoo. For oil based stains, spot clean with a dry cleaning solvent being sure to test area first. CLEANING BY A PROFESSIONAL SERVICE IS RECOMMENDED.

Flame Resistance: California Technical Bulletin 117-2013; Cover Fabric Test; CS-191-53, Class 1; BIFMA X5.7-1991; UFAC, Class 1; B. S. 5852 Part 1: 1979 Ignition Source 0, smoldering cigarette. 

Fabrics by Absecon Mills, Inc. Fabric performance symbols indicate that a fabric performs to commercial furniture manufacturing standards and passes all applicable testing as specified by the Association for Contract Textiles (ACT).

6/2012 | For additional cards or memo samples:

email samples@anddstyle.com or call 1-877-356-4557



Absecon Mills is focused on being a responsible corporate entity and we are continually striving to find ways to help preserve our environment, increase energy efficiency and reduce waste. Our mode of manufacturing is specifically designed to prevent damage to the environment. Our products are woven using wind power and many are constructed with polypropylene (a by-product of gasoline manufacturing, utilizing post-industrial waste) and recycled polyester, which helps keep post-consumer waste in the material stream and out of landfills. Absecon offers finishes that use ten times less fluorocarbons than conventional finishes and are SCS Indoor Advantage Gold certified. We participate in a fabric recycling program and work hard to lessen our footprint on the environment. For more information on our green initiatives, please visit www.absecon.com



Colors may vary slightly from dye lot to dye lot.



» Made with Repreve® recycled polyester!

Our very successful Cantara program has been re-engineered using eco-friendly REPREVE® recycled polyester yarn. REPREVE® yarns are made from pre-consumer polyester fiber waste and post-consumer plastics, including PET water and soda bottles. The use of these yarns reaffirms our commitment to sustainability and to the environment.