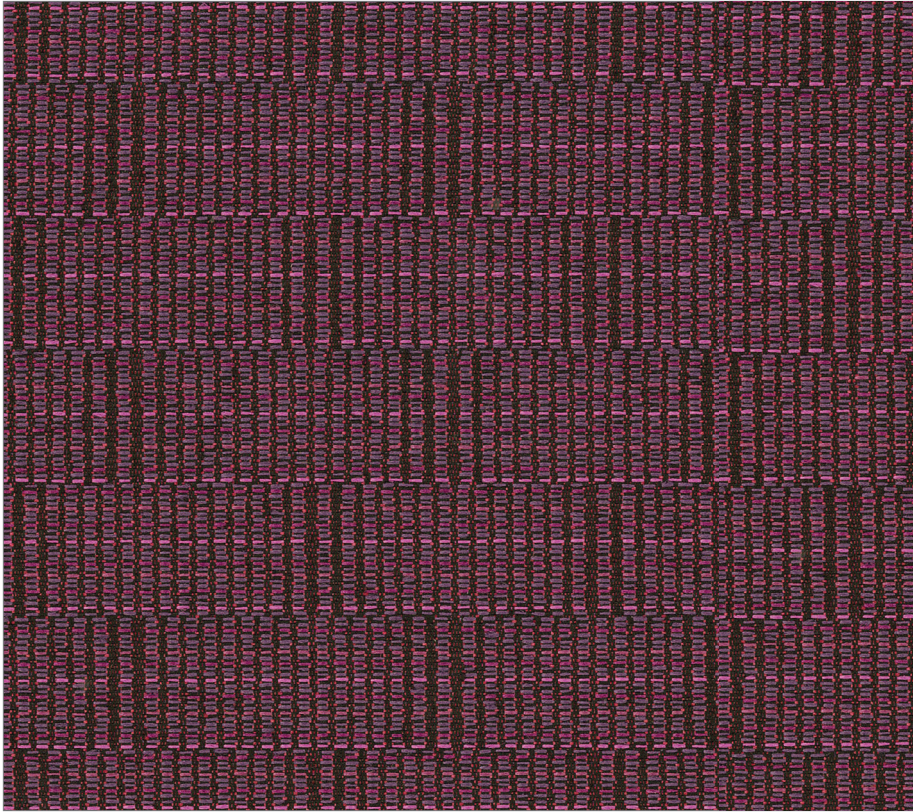
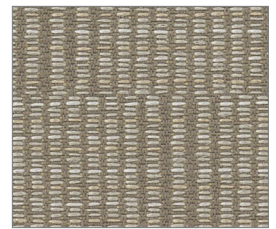


# CORRIDOR<sup>®</sup>

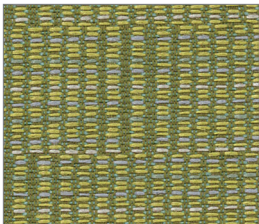
100% Polyester



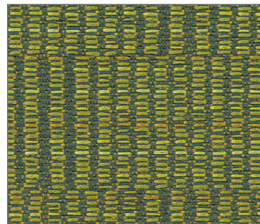
AMETHYST



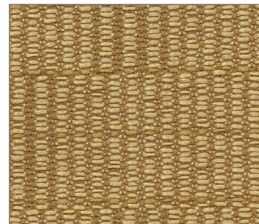
MINERAL



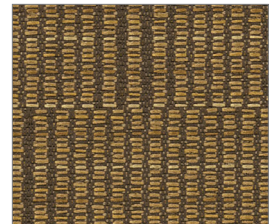
MINT JULEP



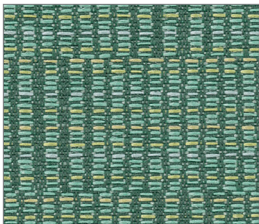
PALISADES



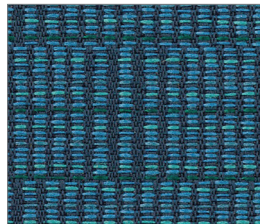
BARLEY



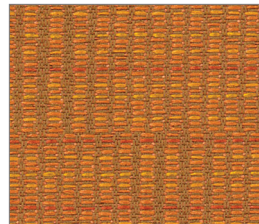
CAFE



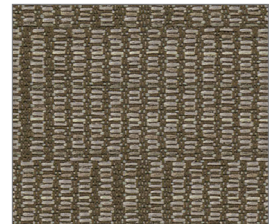
POOLSIDE



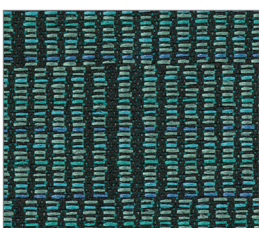
CAPRI



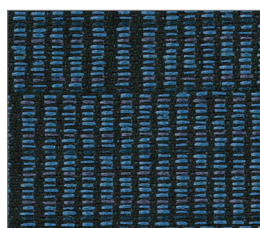
TANGELO



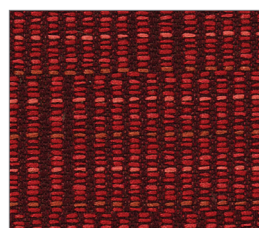
GRAPHITE



TROPICAL TEAL



GROTTO



CLARET



NIGHTFALL

# Corridor<sup>®</sup> UPHOLSTERY FABRIC

5\* Pattern is covered by a 5 year limited performance warranty. Contact your sales representative for written warranty terms and conditions.

## TECHNICAL INFORMATION

**Fiber:** 100% Polyester  
**Backing | Finish:** Acrylic with Stain Repellent  
**Abrasion Resistance:** 100,000 double rubs (cotton duck)  
**Weight:** 11.8 ounces per linear yard (371 g/m)  
**Width:** 54" (minimum usable)  
**Repeat:** 1-7/16"H x 1-3/8"V (Pattern is woven up the roll and suitable for railroading)  
**Lightfastness:** 40 Hours, Class 5  
**Colorfastness:** Wet - Class 4 | Dry - Class 4.5  
**Seam Slippage\*:** Warp - 59 lbs | Fill - 78 lbs.  
**Cleaning Instructions:** WS - For water based stains, use mild detergent foam or upholstery shampoo. For oil based stains, spot clean with a dry cleaning solvent being sure to test area first.

**Flame Resistance:** California Technical Bulletin 117-2013; NFPA 260

This pattern does not contain fire retardant additives.

## ABSECON

Fabrics by Absecon Mills, Inc.  
[www.absecon.com](http://www.absecon.com)

08/2020 | For additional cards or memo samples:  
email [samples@absecon.com](mailto:samples@absecon.com) or call 1-877-356-4557



Absecon Mills is focused on being a responsible corporate entity and we are continually striving to find ways to help preserve our environment, increase energy efficiency and reduce waste. Our mode of manufacturing is specifically designed to prevent damage to the environment. Our products are woven using wind power and many are constructed with polypropylene (a by-product of gasoline manufacturing, utilizing post-industrial waste) and recycled polyester, which helps keep post-consumer waste in the material stream and out of landfills. Absecon offers finishes that use ten times less fluorocarbons than conventional finishes and are SCS Indoor Advantage Gold certified. We participate in a fabric recycling program and work hard to lessen our footprint on the environment. For more information on our green initiatives, please visit [www.absecon.com](http://www.absecon.com)



Colors may vary slightly from dye lot to dye lot.

\*ASTM-D-4034: Seam 12mm from edge using 7 stitches per 25mm (1"), plain lock stitch and a 22 ballpoint needle)



Show in Poolside Colorway