

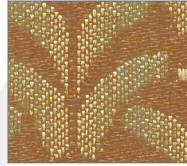
Devotion IV *Upgraded Fabrics*

UPHOLSTERY FABRIC

5*



MISSION® *Slate*



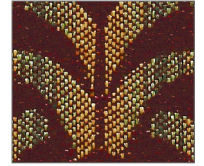
Mesa Verde



Prairie



Blue



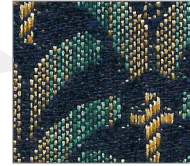
Burgundy



Dune



Black Gold



Nautica



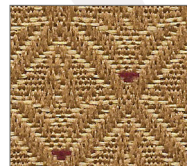
Cardinal



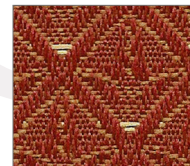
PARLOUR® *Truffle*



Smokey Ash



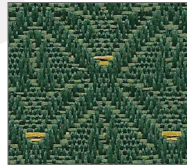
Honey Gold



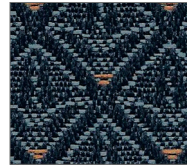
Rustica



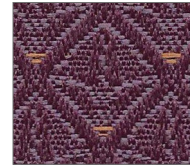
Tuscan Red



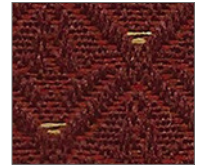
Spring Meadow



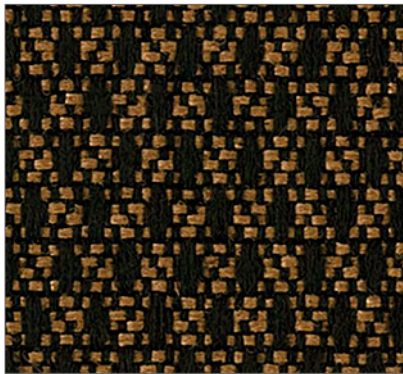
Wilshire Blue



Victorian Purple



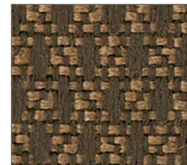
Rio Red



PRIMARY *Log Cabin*



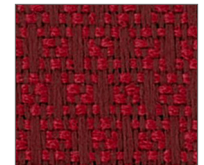
Luna



Otter



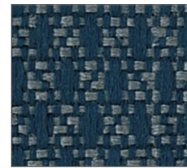
Bengal Grey



Riding Hood



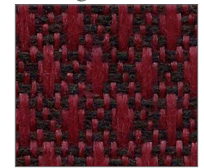
Mojave



Denim



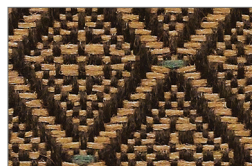
Regency



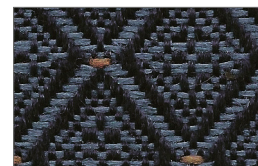
Claret



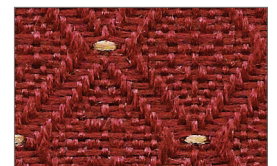
JETTA® *Timberwolf*



Brindle



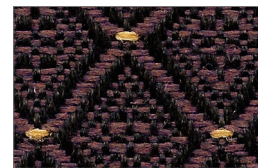
Azul



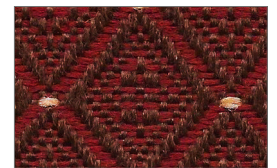
Rosewood



Blue Grass



Purple



Zinfandel

* Covered by a 5 year limited performance warranty.

Devotion IV COLLECTION

5* Patterns are covered by a 5 year limited performance warranty. Contact your sales representative for written warranty terms and conditions.

TECHNICAL INFORMATION									
Pattern/Direction <small>(All patterns are suitable for railroading)</small>	Fiber	Repeat	Backing & Finish	Weight (p/yard)	Cleaning Code	Abrasion ASTM 4157 <small>(Double Rubs)</small>	Lightfastness AATCC 16E	Colorfastness AATCC 8	Seam Slippage* ASTM-D-4034
Jetta <small>(Up the roll)</small>	100% Marquésa Lana™	15-16" H 1-3/16" V	Acrylic	11.6 oz.	WS	30,000 <small>(Wire Screen)</small>	40 hours Class 5	Wet: Class 5 Dry: Class 5	Warp - 74 lbs Fill - 94 lbs
Mission <small>(Railroaded)</small>	100% Polyester	1-1/2" H 1-1/4" V	Acrylic with Teflon®	10.0 oz.	WS	100,000 <small>(Cotton Duck)</small>	40 hours Class 5	Wet: Class 4.5 Dry: Class 4.5	Warp - 92 lbs Fill - 100 lbs
Parlour <small>(Up the roll)</small>	100% Polyester	3/4" H 3/4" V	Acrylic with Teflon®	10.8 oz.	WS	50,000 <small>(Cotton Duck)</small>	40 Hours Class 5	Wet: Class 4.5 Dry: Class 4.5	Warp - 90 lbs Fill - 74 lbs
Primary <small>(Up the roll)</small>	100% Marquésa Lana™	1/4" H 1/2" V	Acrylic	13.0 oz.	WS	70,000 <small>(Wire Screen)</small>	60 Hours Class 5	Wet: Class 5 Dry: Class 5	Warp - 62 lbs Fill - 54 lbs

Cleaning Instructions:

WS - For water based stains, use mild detergent foam or upholstery shampoo. For oil based stains, spot clean with a dry cleaning solvent, being sure to test area first.

Flame Resistance: California Technical Bulletin 117-2013; NFPA 260

Fabrics by Absecon Mills, Inc. Fabric performance symbols indicate that a fabric performs to commercial furniture manufacturing standards and passes all applicable testing as specified by the Association for Contract Textiles (ACT).

12/2015 | For additional cards or memo samples:

email samples@absecon.com or call 1-877-356-4557



Absecon Mills is focused on being a responsible corporate entity and we are continually striving to find ways to help preserve our environment, increase energy efficiency and reduce waste. Our mode of manufacturing is specifically designed to prevent damage to the environment. Our products are woven using wind power and many are constructed with polypropylene (a by-product of gasoline manufacturing, utilizing post-industrial waste) and recycled polyester, which helps keep post-consumer waste in the material stream and out of landfills. Absecon offers finishes that use ten times less fluorocarbons than conventional finishes and are SCS Indoor Advantage Gold certified. We participate in a fabric recycling program and work hard to lessen our footprint on the environment. For more information on our green initiatives, please visit www.absecon.com



WOVEN WITH WIND POWER

Colors may vary slightly from dye lot to dye lot.

*ASTM-D-4034: Seam 12mm from edge using 7 stitches per 25mm (1"), plain lock stitch and a 22 ballpoint needle)

