

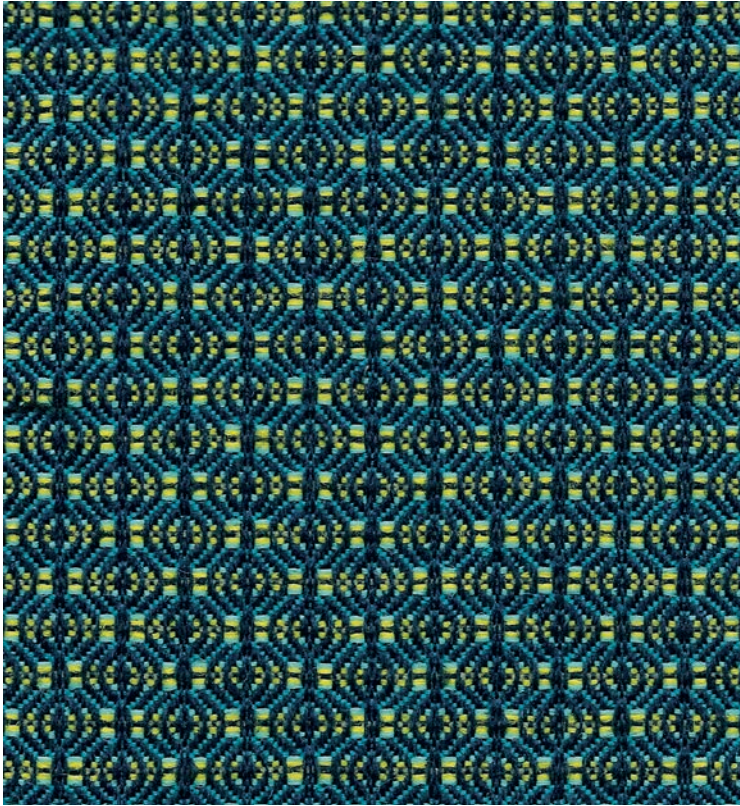
Journal[®]

UPHOLSTERY FABRIC

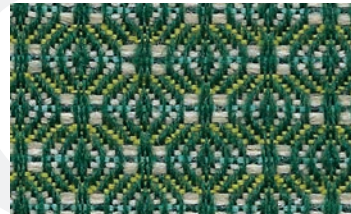
5*

63% Polyester

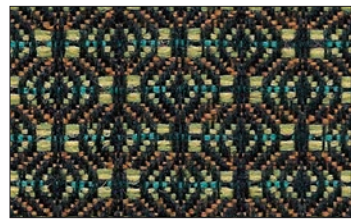
37% Polyolefin



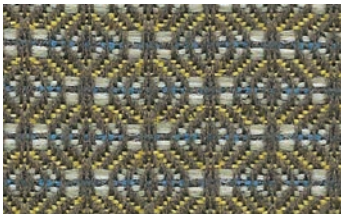
CAYMAN



FIDDLEHEAD



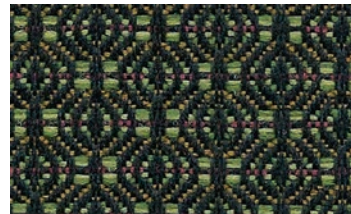
AUTUMN



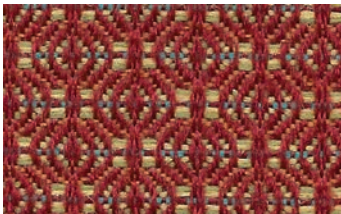
DRY SAGE



CASCADE



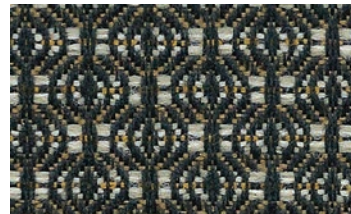
CLOVER



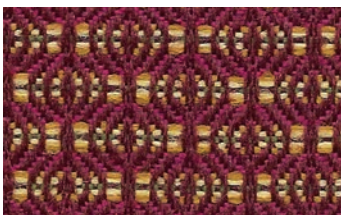
BLAZE



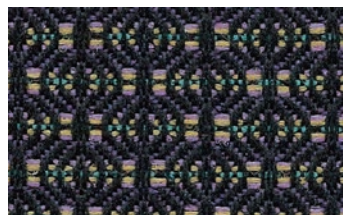
MARINA



CAVIAR



ROSEATE



BERRY



ESPRESSO

* Covered by a 5 year limited performance warranty.

TECHNICAL INFORMATION

Fiber: 63% Polyester | 37% Polyolefin

Backing | Finish: Acrylic

A Abrasion Resistance: 55,000 double rubs (wire screen)

Weight: 11.2 ounces per linear yard (348 g/m)

Width: 54" (137-140 cm)

Repeat: 1-2" H x 5/8" V (Pattern is woven up the roll and suitable for railroading)

*** Lightfastness:** 40 Hours, Class 5

☘ Colorfastness: Wet - Class 5 | Dry - Class 4.5

☆ Seam Slippage: Warp - 85 lbs | Fill - 95 lbs.

Cleaning Instructions: WS - For water based stains, use mild detergent foam or upholstery shampoo. For oil based stains, spot clean with a dry cleaning solvent being sure to test area first.

🔥 Flame Resistance: California Technical Bulletin 117, Section E; CS-191-53, Class 1; BIFMA X5.7-1991; UFAC, Class 1; B. S. 5852 Part 1: 1979 Ignition Source 0, smoldering cigarette.

Fabrics by Absecon Mills, Inc. Fabric performance symbols indicate that a fabric performs to commercial furniture manufacturing standards and passes all applicable testing as specified by the Association for Contract Textiles (ACT).

05/2013 | For additional cards or memo samples:

email samples@absecon.com or call 1-877-356-4557



ACADEMIC



CORPORATE



HOSPITALITY



THEATER



WORSHIP



Absecon Mills is focused on being a responsible corporate entity and we are continually striving to find ways to help preserve our environment, increase energy efficiency and reduce waste. Our mode of manufacturing is specifically designed to prevent damage to the environment. Our products are woven using wind power and many are constructed with polypropylene (a by-product of gasoline manufacturing, utilizing post-industrial waste) and recycled polyester, which helps keep post-consumer waste in the material stream and out of landfills. Absecon offers finishes that use ten times less fluorocarbons than conventional finishes and are SCS Indoor Advantage Gold certified. We participate in a fabric recycling program and work hard to lessen our footprint on the environment. For more information on our green initiatives, please visit www.absecon.com



WOVEN WITH WIND POWER

Colors may vary slightly from dye lot to dye lot.

*ASTM-D-3597-02: Seam 12mm from edge using 7 stitches per 25mm (1"), plain lock stitch and a 22 ballpoint needle)

While this pattern is not recommended for welt cords, we suggest that you verify the suitability of any fabric for the intended application.

