

A & D Style

Fabric Collections From Absecon Mills & Douglass Industries



Portfolio >> *One*

FLOUNCE

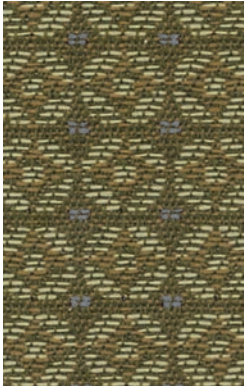
FUSE

GAMUT

RITZY

STRAIGHTAWAY

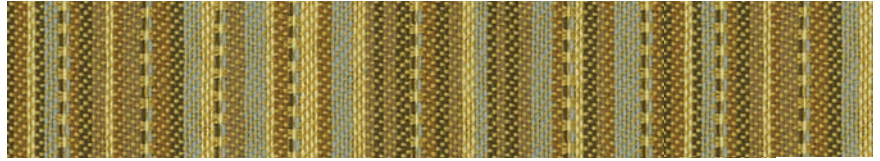
TRINKET



TRINKET
Pebble



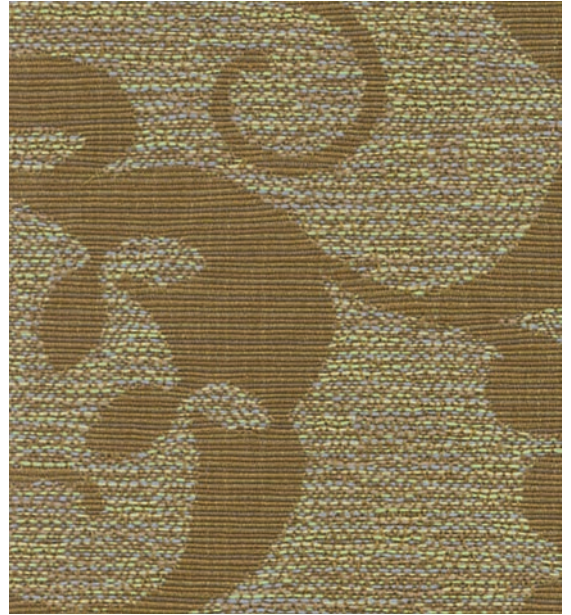
RITZY
Kashmir



STRAIGHTAWAY
Beach



FUSE
Goldenrod



FLOUNCE
Dune



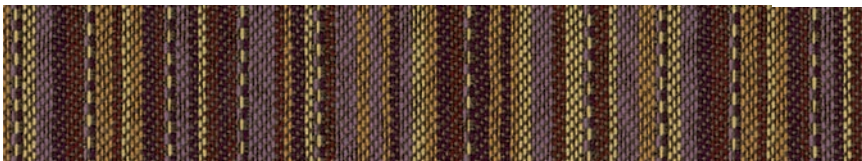
GAMUT
Marigold



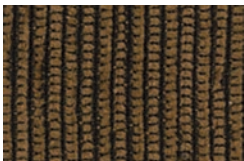
RITZY
Ashen



TRINKET
Clove



STRAIGHTAWAY
Vineyard



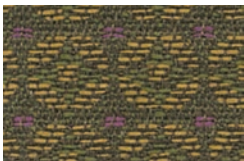
RITZY
Brazilwood



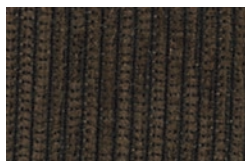
FUSE
Sandstone



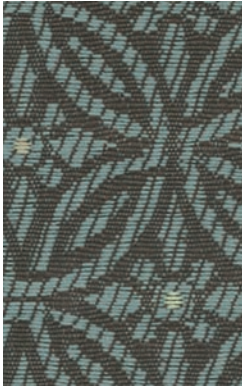
GAMUT
Mocha



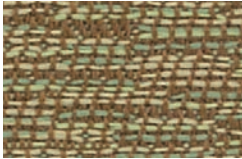
TRINKET
Mystic Plum



RITZY
Black Walnut



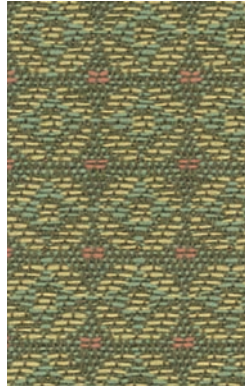
GAMUT
Spritzer



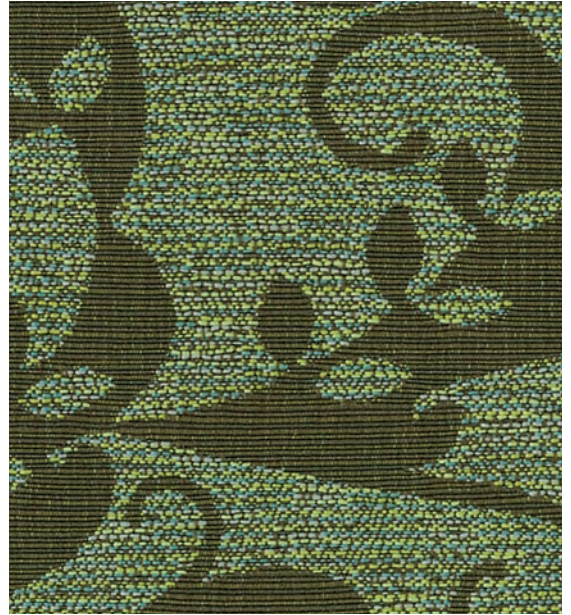
FUSE
Aloe



STRAIGHTAWAY
Spa



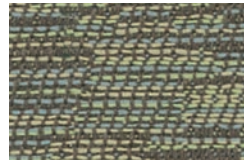
TRINKET
Melon



FLOUNCE
Meadow



GAMUT
Ivy



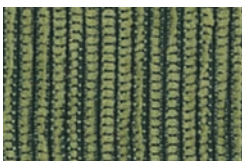
FUSE
Tranquil



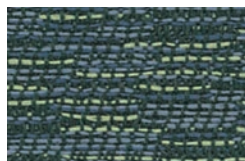
TRINKET
Sky



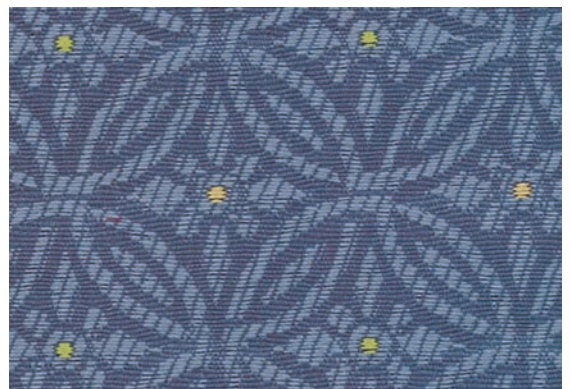
STRAIGHTAWAY
Garden



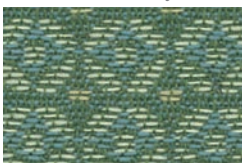
RITZY
New Leaf



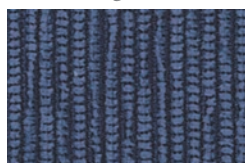
FUSE
Regatta



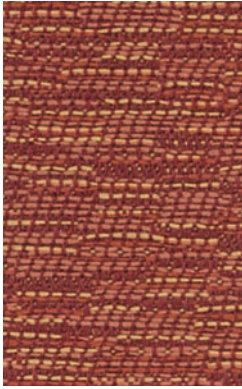
GAMUT
Marina



TRINKET
Teal



RITZY
Levi Blue



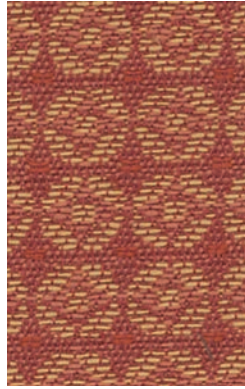
FUSE
Russet



STRAIGHTAWAY
Sunset



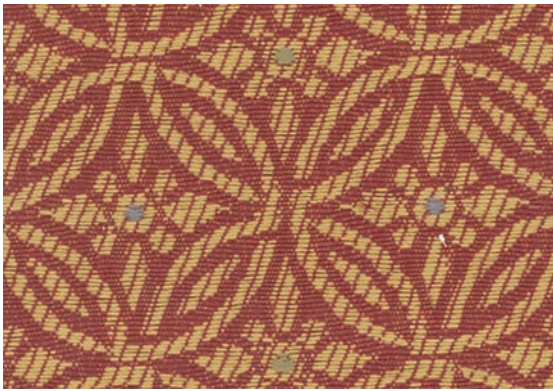
RITZY
Clay Pot



TRINKET
Chili



FLOUNCE
Habanero



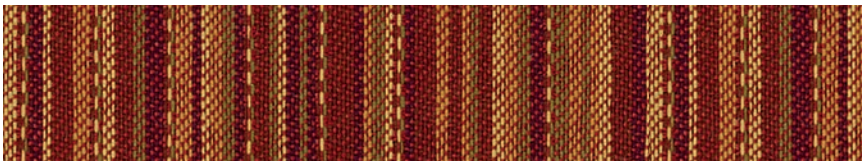
GAMUT
Tomato



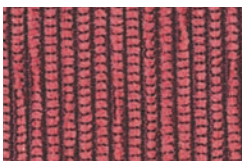
RITZY
Honey



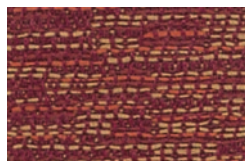
GAMUT
Currant



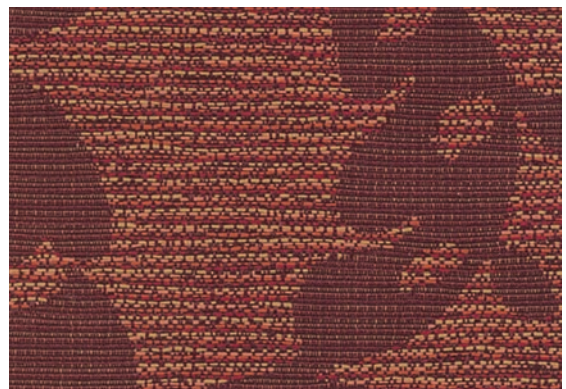
STRAIGHTAWAY
Spice



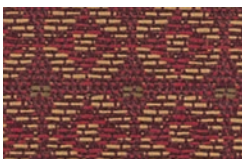
RITZY
Cranapple



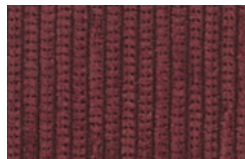
FUSE
Red Pepper



FLOUNCE
Cayenne



TRINKET
Pomegranate



RITZY
Wineberry

»» WHAT IS CRYPTON?

Crypton® offers the beauty and richness of upholstery fabric, while providing performance previously only possible with vinyl. This amazing textile is engineered to provide the following features.

STAIN RESISTANCE:

Almost everything comes off with a simple soap and water solution

MOISTURE RESISTANCE:

Nothing will get past the Crypton® moisture barrier

MICROBIAL RESISTANCE:

Helps prevent the growth of bacteria

BREATHABLE COMFORT:

As comfortable as your favorite cotton shirt

EASY TO USE AS UPHOLSTERY:

Flexible, much more pliable than vinyl

EXCEPTIONAL DURABILITY:

Exceeds heavy duty standards

Designers around the world have learned to count on Crypton® Super Fabrics for consistent performance features. Crypton® is not a spray or a finish, nor is it a laminate or a film. It contains no plasticizers. Crypton® fabrics are immersed in a patented formula (P 385), which permanently encapsulates every fiber.

»» HOW DO YOU CLEAN CRYPTON?

There is nothing unusual about the normal care of Crypton®. Like any beautiful textiles, Crypton® must be cleaned on a regular basis. Since dirt and dust build up on fabric, vacuuming regularly is advised. To prolong the life of your furniture, cushions should be rotated on a frequent basis. The everlasting beauty of Crypton® can be found in its ability to resist stains.

CLEANING LIQUIDS

Most spills can be easily cleaned with cotton. Just wipe up the spill with a clean cotton towel. Please follow directions for solid or dry stains (below) if a residue remains after wiping.

SOLID OR DRY SPILLS

Remove as much as of the dried stain as possible with a dull flat knife. By removing the majority of the stain, there is less of a chance the staining agent will be rubbed into the fabric as it is cleaned. In many cases, this process will remove the stain. However, if the stain is still present, proceed with wet cleaning treatment below.

WET CLEANING TREATMENT

For most stains, simply make a paste using equal amounts of an enzyme powder detergent, such as Tide® or Cheer®, and water. Apply the solution to the stain. Allow the solution to remain for at least one minute (max. 5 minutes) to allow the detergent to begin removing the stain. Then, scrub the area with a nylon brush. After scrubbing, the area needs to be rinsed thoroughly using a sponge and clean water. Water will not affect Crypton®, so please use it liberally. Remember to rinse the soap completely because the fabric will look and perform it's best when all the soap is removed. Then, dry with a clean cloth. Any remaining moisture (wet spot) will evaporate in a short time. Please remember, with Crypton's® water barrier, the foam will not become wet in the rinsing process. For some oil based stains and ink, you should pretreat the area with rubbing alcohol.

STEAM CLEANING

Steam cleaning is an ideal method of thoroughly cleaning Crypton®. Spots can be removed by pre-treating them with either the soap solution mentioned above or a pre-treatment solution from the steam cleaning company. Most solutions provided by these companies are acceptable for Crypton® fabrics.



Pattern Flounce for scale reference.

Portfolio **»** One CRYPTON® COLLECTION

10* Pattern is covered by a 10 year limited performance warranty. Contact your sales representative for written warranty terms and conditions.

TECHNICAL INFORMATION						A	☀	★
Pattern/ Direction	Fiber	Repeat	Backing Finish	Weight (per yard)	Cleaning Code	Abrasion ASTM 4157 (Double Rubs)	Lightfastness AATCC 16E	Seam Slippage ASTM-D-4034
Flounce (Up the roll)	100% Polyester	19-1/8" H 6-3/16" V	Crypton	11.5 oz.	W	50,000 (Cotton Duck)	60 hours Class 5	Warp - 52 lbs Fill - 42 lbs
Fuse (Up the roll)	100% Polyester	3-9/16" H 4-3/8" V	Crypton	13.9 oz.	W	50,000 (Cotton Duck)	60 hours Class 5	Warp - 50 lbs Fill - 44 lbs
Gamut (Up the roll)	100% Polyester	1-9/16" H 1-9/16" V	Crypton	13.3 oz.	W	50,000 (Cotton Duck)	60 Hours Class 5	Warp - 52 lbs Fill - 44 lbs
Ritzzy (Railroaded)	100% Polyester	1/8" H None V	Crypton	11.0 oz.	W	50,000 (Cotton Duck)	6 Hours Class 5	Warp - 99 lbs Fill - 56 lbs
Straightaway (Railroaded)	100% Polyester	3-3/8" H None V	Crypton	10.1 oz.	W	100,000 (Cotton Duck)	60 Hours Class 5	Warp - 88 lbs Fill - 46 lbs
Trinket (Up the roll)	100% Polyester	7/16" H 7/16" V	Crypton	12.4 oz.	W	50,000 (Cotton Duck)	60 Hours Class 5	Warp - 53 lbs Fill - 42 lbs

Cleaning Instructions: W - Use a water based cleaner. Spot clean fabric with water based cleaning agents, such as a mild detergent foam or commercial upholstery shampoo. Use sparingly and avoid overwetting.

 Flame Resistance: California Technical Bulletin 117-2013; NFPA 260.

Fabrics by Absecon Mills, Inc. Fabric performance symbols indicate that a fabric performs to commercial furniture manufacturing standards and passes all applicable testing as specified by the Association for Contract Textiles (ACT).

08/2012 | For additional cards or memo samples:

email samples@aanddstyle.com or call **1-877-356-4557**



Absecon Mills is focused on being a responsible corporate entity and we are continually striving to find ways to help preserve our environment, increase energy efficiency and reduce waste. Our mode of manufacturing is specifically designed to prevent damage to the environment. Our products are woven using wind power and many are constructed with polypropylene (a by-product of gasoline manufacturing, utilizing post-industrial waste) and recycled polyester, which helps keep post-consumer waste in the material stream and out of landfills. Absecon offers finishes that use ten times less fluorocarbons than conventional finishes and are SCS Indoor Advantage Gold certified. We participate in a fabric recycling program and work hard to lessen our footprint on the environment. For more information on our green initiatives, please visit www.absecon.com



WOVEN WITH
WIND POWER

Colors may vary slightly from dye lot to dye lot.

*ASTM-D-4034: Seam 12mm from edge using 7 stitches per 25mm (1"), plain lock stitch and a 22 ballpoint needle)

