

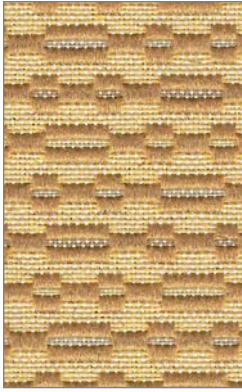


 **CRYPTON**[®]
SUPER FABRIC

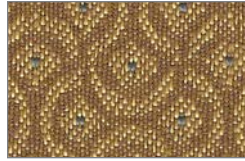


Portfolio **»** *Two*

BRIONI
DINARDO
DUNHILL DARK
DUNHILL LIGHT
EMPORIO
ROCOCO
SWANKY
ZANINI



DUNHILL DARK
Cornsilk



EMPORIO
Fawn



DINARDO
Sandstone



SWANKY
Taupe



ZANINI
Sahara



ROCOCO
Black & Tan



ROCOCO
Pebble



EMPORIO
Woodstock



DUNHILL DARK
Hardwood



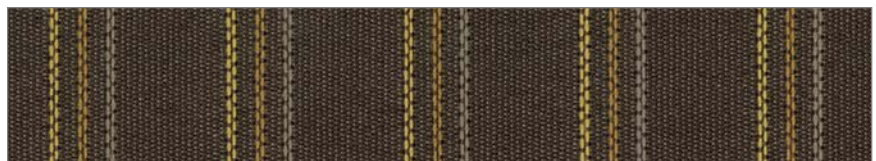
DINARDO
Fossil



ZANINI
Tweed



EMPORIO
Mustang



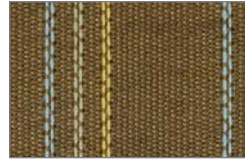
BRIONI
Mocha



EMPORIO
Amber



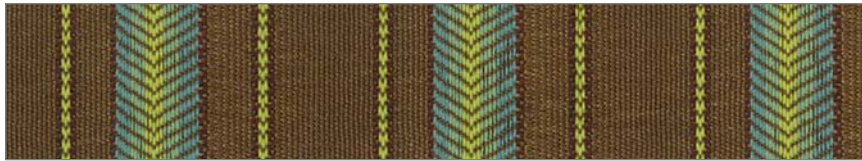
DINARDO
Bronze



BRIONI
Desert



ROCOCO
Rustic Blue



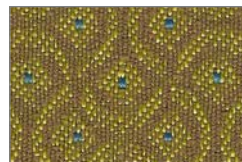
ZANINI
Tropicale



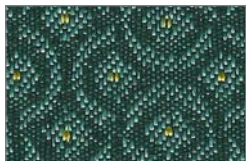
DINARDO
Citrine



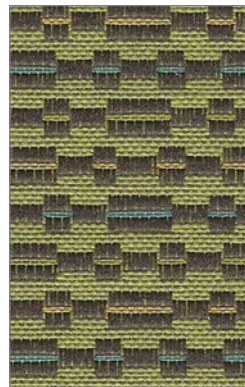
SWANKY
Bluegill



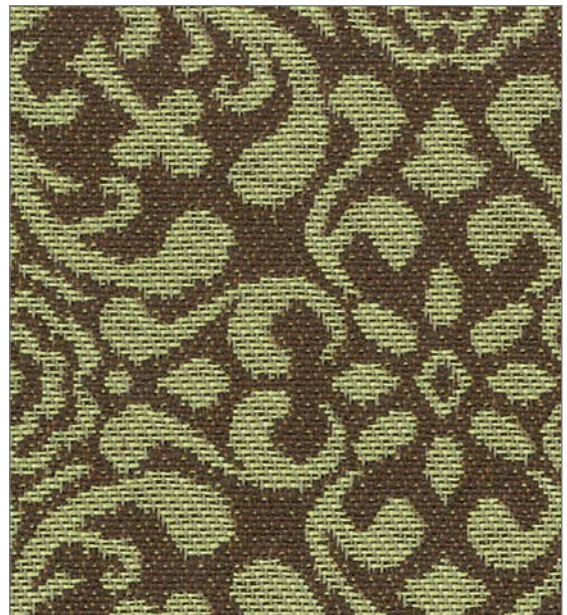
EMPORIO
Bronzina



EMPORIO
Oasis



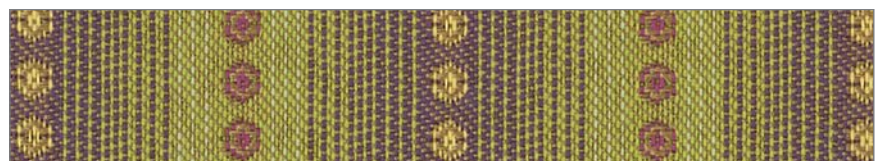
DUNHILL DARK
Margarita



ROCOCO
Palm



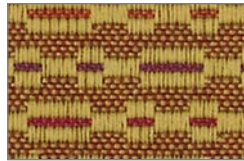
ROCOCO
Teal



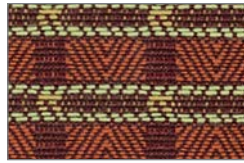
SWANKY
Chartreuse



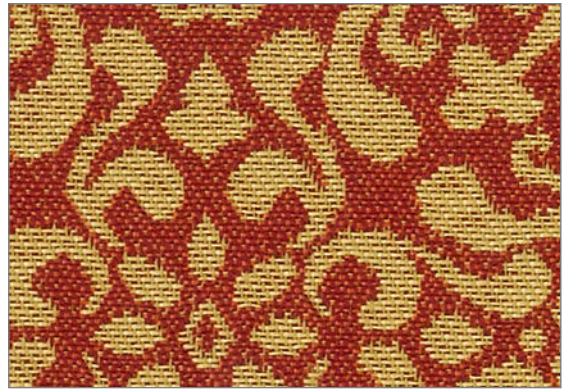
SWANKY
Sundance



DUNHILL LIGHT
Turmeric



DINARDO
Autumn



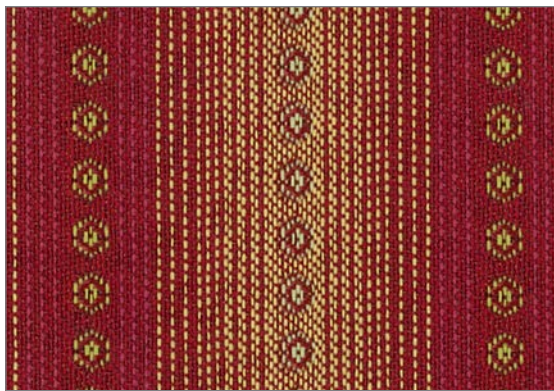
ROCOCO
Tangelo



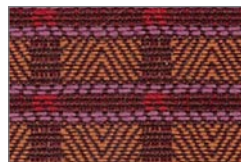
ZANINI
Cranapple



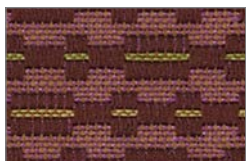
DUNHILL LIGHT
Saffron



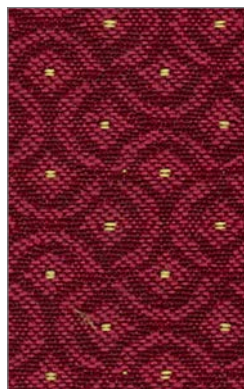
SWANKY
Sedona



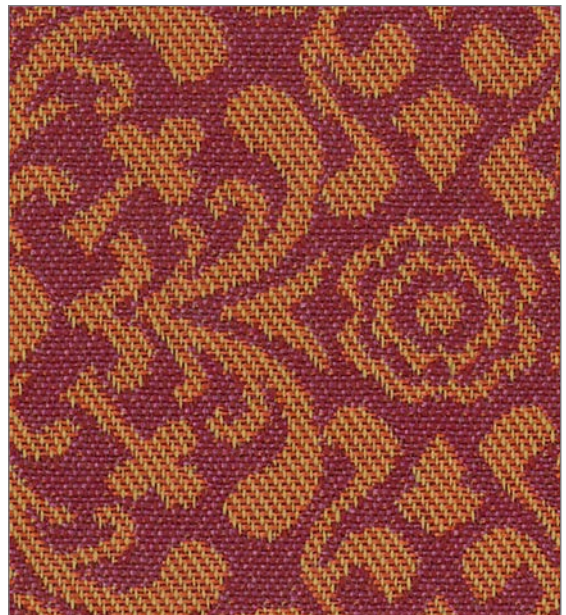
DINARDO
Pomegranate



DUNHILL DARK
Plum



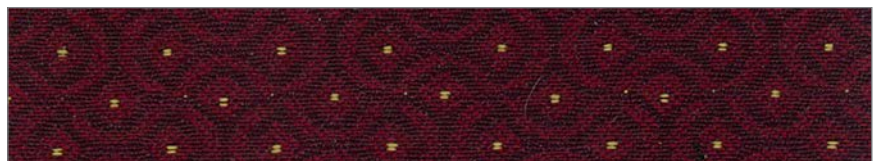
EMPORIO
Cerise



ROCOCO
Cara Pink



BRIONI
Berry



EMPORIO
Shiraz

»» WHAT IS CRYPTON?

Crypton® offers the beauty and richness of upholstery fabric, while providing performance previously only possible with vinyl. This amazing textile is engineered to provide the following features.

STAIN RESISTANCE:

Almost everything comes off with a simple soap and water solution

MOISTURE RESISTANCE:

Nothing will get past the Crypton® moisture barrier

MICROBIAL RESISTANCE:

Helps prevent the growth of bacteria

BREATHABLE COMFORT:

As comfortable as your favorite cotton shirt

EASY TO USE AS UPHOLSTERY:

Flexible, much more pliable than vinyl

EXCEPTIONAL DURABILITY:

Exceeds heavy duty standards

Designers around the world have learned to count on Crypton® Super Fabrics for consistent performance features. Crypton® is not a spray or a finish, nor is it a laminate or a film. It contains no plasticizers. Crypton® fabrics are immersed in a patented formula (P 385), which permanently encapsulates every fiber.

»» HOW DO YOU CLEAN CRYPTON?

There is nothing unusual about the normal care of Crypton®. Like any beautiful textiles, Crypton® must be cleaned on a regular basis. Since dirt and dust build up on fabric, vacuuming regularly is advised. To prolong the life of your furniture, cushions should be rotated on a frequent basis. The everlasting beauty of Crypton® can be found in its ability to resist stains.

CLEANING LIQUIDS

Most spills can be easily cleaned with cotton. Just wipe up the spill with a clean cotton towel. Please follow directions for solid or dry stains (below) if a residue remains after wiping.

SOLID OR DRY SPILLS

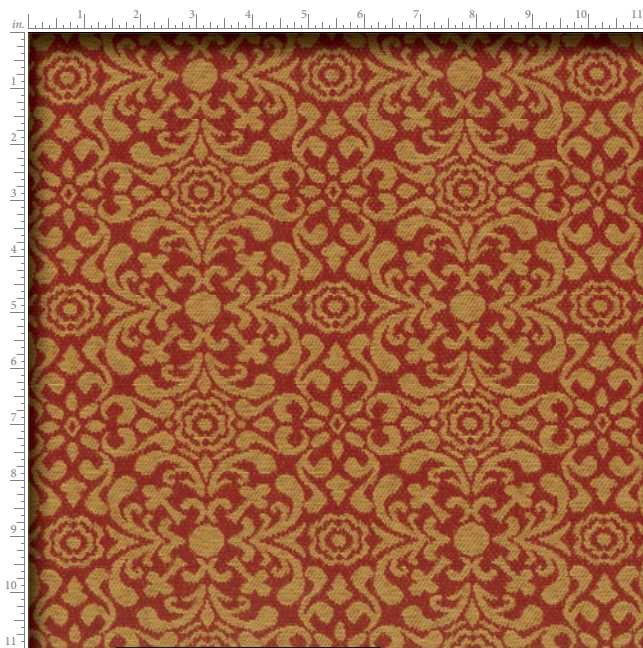
Remove as much as of the dried stain as possible with a dull flat knife. By removing the majority of the stain, there is less of a chance the staining agent will be rubbed into the fabric as it is cleaned. In many cases, this process will remove the stain. However, if the stain is still present, proceed with wet cleaning treatment below.

WET CLEANING TREATMENT

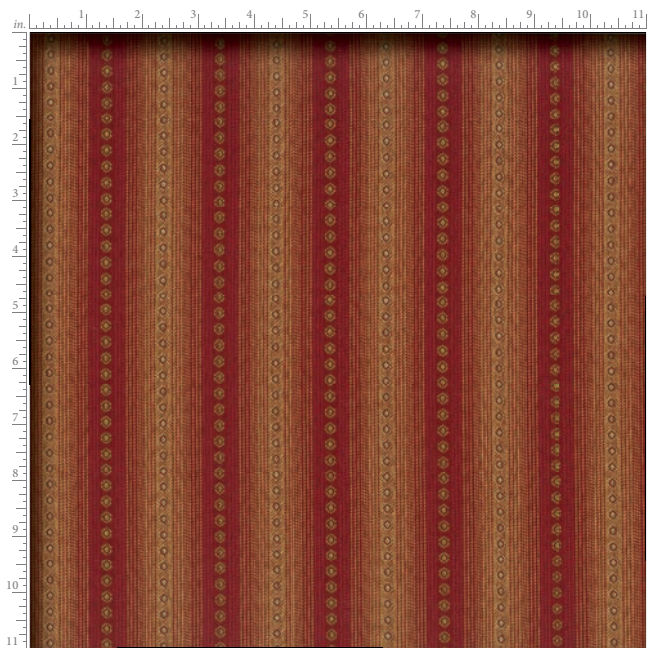
For most stains, simply make a paste using equal amounts of an enzyme powder detergent, such as Tide® or Cheer®, and water. Apply the solution to the stain. Allow the solution to remain for at least one minute (max. 5 minutes) to allow the detergent to begin removing the stain. Then, scrub the area with a nylon brush. After scrubbing, the area needs to be rinsed thoroughly using a sponge and clean water. Water will not affect Crypton®, so please use it liberally. Remember to rinse the soap completely because the fabric will look and perform it's best when all the soap is removed. Then, dry with a clean cloth. Any remaining moisture (wet spot) will evaporate in a short time. Please remember, with Crypton's® water barrier, the foam will not become wet in the rinsing process. For some oil based stains and ink, you should pretreat the area with rubbing alcohol.

STEAM CLEANING

Steam cleaning is an ideal method of thoroughly cleaning Crypton®. Spots can be removed by pre-treating them with either the soap solution mentioned above or a pre-treatment solution from the steam cleaning company. Most solutions provided by these companies are acceptable for Crypton® fabrics.



Pattern Rococo for scale reference.



Pattern Swanky for scale reference.

Portfolio **»** Two CRYPTON® COLLECTION

10* Pattern is covered by a 10 year limited performance warranty. Contact your sales representative for written warranty terms and conditions.

TECHNICAL INFORMATION

Pattern/ Direction	Fiber	Repeat	Backing Finish	Weight (per yard)	Abrasion ASTM 4197 (Double Rubs)	Colorfastness AATCC 8	Lightfastness AATCC 16E	Seam Slippage ASTM-D-4034
Brioni (Railroaded)	100% Polyester	7/8" V	Crypton®	15.5 oz.	50,000 (Wire Screen)	Dry: Class 4.5 Wet: Class 4.5	40 hours Class 4.5	Warp - 51 lbs Fill - 41 lbs
Dinardo® (Up the roll)	100% Polyester	9/16" H 7/16" V	Crypton®	16.8 oz.	50,000 (Wire Screen)	Dry: Class 4.5 Wet: Class 4.5	40 hours Class 5	Warp - 99 lbs Fill - 94 lbs
Dunhill Light/Dark® (Up the roll)	100% Polyester	1-3/16" H 1-1/2" V	Crypton®	20.8 oz.	50,000 (Wire Screen)	Dry: Class 4.5 Wet: Class 4.5	40 Hours Class 5	Warp - 99 lbs Fill - 99 lbs
Emporio (Up the roll)	100% Polyester	1-1/8" H 1" V	Crypton®	16.4 oz.	50,000 (Wire Screen)	Dry: Class 4.5 Wet: Class 4.5	40 Hours Class 4.5	Warp - 50 lbs Fill - 38 lbs
Rococo® (Up the roll)	100% Polyester	4-3/4" H 4-3/16" V	Crypton®	15.3 oz.	50,000 (Wire Screen)	Dry: Class 4.5 Wet: Class 4.5	40 Hours Class 5	Warp - 51 lbs Fill - 40 lbs
Swanky® (Railroaded)	100% Polyester	2" V	Crypton®	15.7 oz.	50,000 (Wire Screen)	Dry: Class 4.5 Wet: Class 4.5	40 Hours Class 4.5	Warp - 50 lbs Fill - 59 lbs
Zanini (Railroaded)	100% Polyester	1-9/16" V	Crypton®	14.8 oz.	50,000 (Wire Screen)	Dry: Class 4.5 Wet: Class 4.5	40 Hours Class 4.5	Warp - 41 lbs Fill - 51 lbs

Cleaning Instructions: W - Use a water based cleaner. Spot clean fabric with water based cleaning agents such as a mild detergent foam or commercial upholstery shampoo. Use sparingly and avoid overwetting. CLEANING BY A PROFESSIONAL SERVICE IS RECOMMENDED.

For best results, please review the Crypton® cleaning instructions printed on this sample card.

Flame Resistance: California Technical Bulletin 117-2013: Cover Fabric Test; CS-191-53, Class 1; BIFMA X5.7-1991; UFAC, Class 1; B. S. 5852 Part 1: 1979 Ignition Source 0, smouldering cigarette. 

Fabrics by Absecon Mills, Inc. Fabric performance symbols indicate that a fabric performs to commercial furniture manufacturing standards and passes all applicable testing as specified by the Association for Contract Textiles (ACT).

10/2011 | For additional cards or memo samples:

email samples@absecon.com or call **1-877-356-4557**



Absecon Mills is focused on being a responsible corporate entity and we are continually striving to find ways to help preserve our environment, increase energy efficiency and reduce waste. Our mode of manufacturing is specifically designed to prevent damage to the environment. Our products are woven using wind power and many are constructed with polypropylene (a by-product of gasoline manufacturing, utilizing post-industrial waste) and recycled polyester, which helps keep post-consumer waste in the material stream and out of landfills. Absecon offers finishes that use ten times less fluorocarbons than conventional finishes and are SCS Indoor Advantage Gold certified. We participate in a fabric recycling program and work hard to lessen our footprint on the environment. For more information on our green initiatives, please visit www.absecon.com



WOVEN WITH WIND POWER

