

# A & D Style

Fabric Collections From Absecon Mills & Douglass Industries



Presidio  
Collection

STAINLESS STEEL®

*performance finish with  
enhanced fire retardant properties*



Sidestep - Blonde



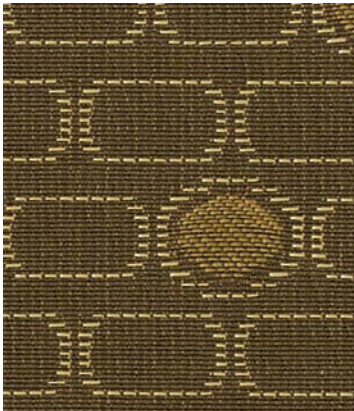
Prisma - Desert Grass



Cirque - Bronze



Roundabout - Coffee Cream



Lair - Cocoa



Sidestep - Canyon



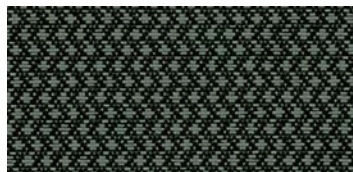
Cirque - Mocha



Ashbury - Bronze



Trapeze - Steel



Sidestep - Smoke



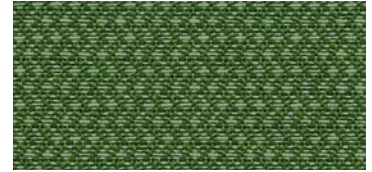
Prisma - Texas Tea



Trapeze - Mint Chocolate



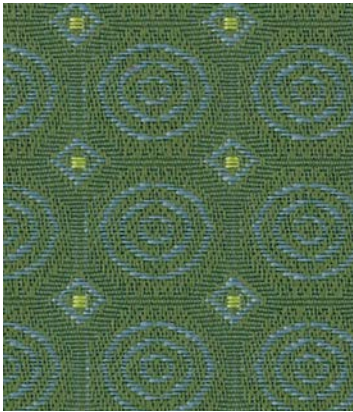
Prisma - Cactus



Sidestep - Aloe



Ashbury - Meadow



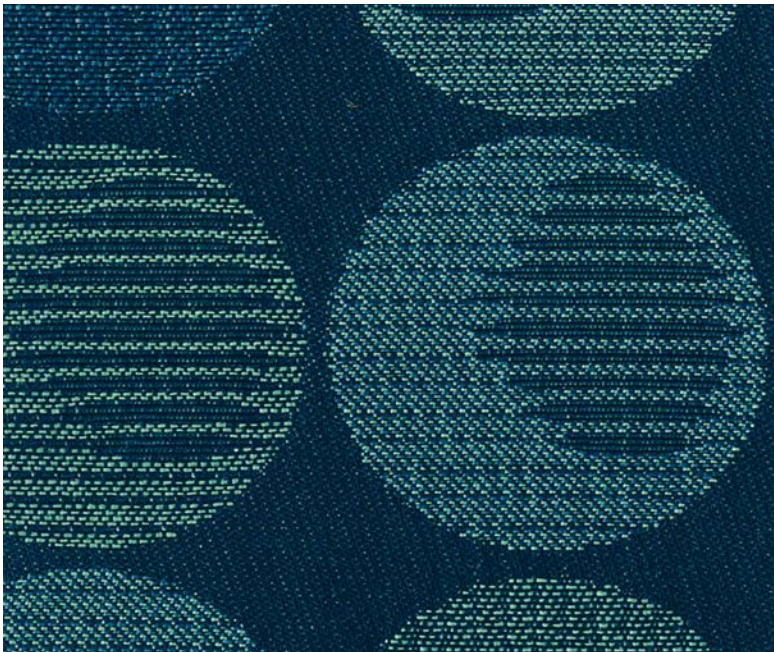
Cirque - Tranquility



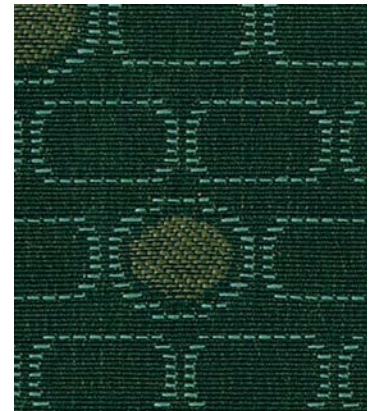
Sidestep - Lawn Green



Trapeze - Oceana



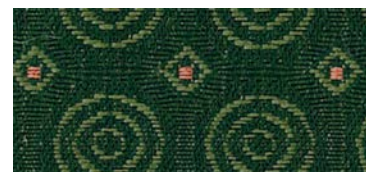
Roundabout - Seaside



Lair - Balsam



Linea - Grass



Cirque - Summer Grass



Prisma - Rustic Blue



Linea - Turkish Blue



Sidestep - Blue



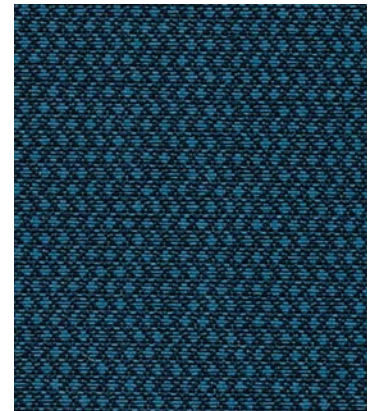
Ashbury - Blue Stone



Cirque - Blue



Trapeze - Cobalt



Sidestep - Navy



Prisma - Blue Moon



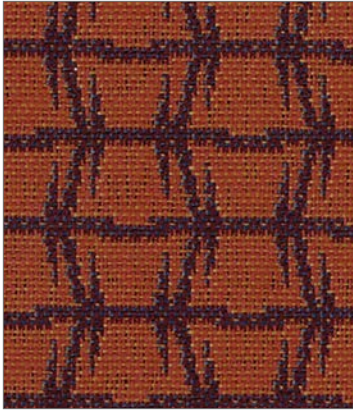
Trapeze - Violetta



Sidestep - Dark Iris



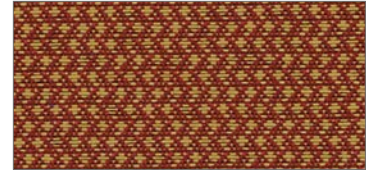
Lair - Patriot Blue



Trapeze - Coral Azalea



Cirque - Deco Coral



Sidestep - Spice



Ashbury - Antique Red



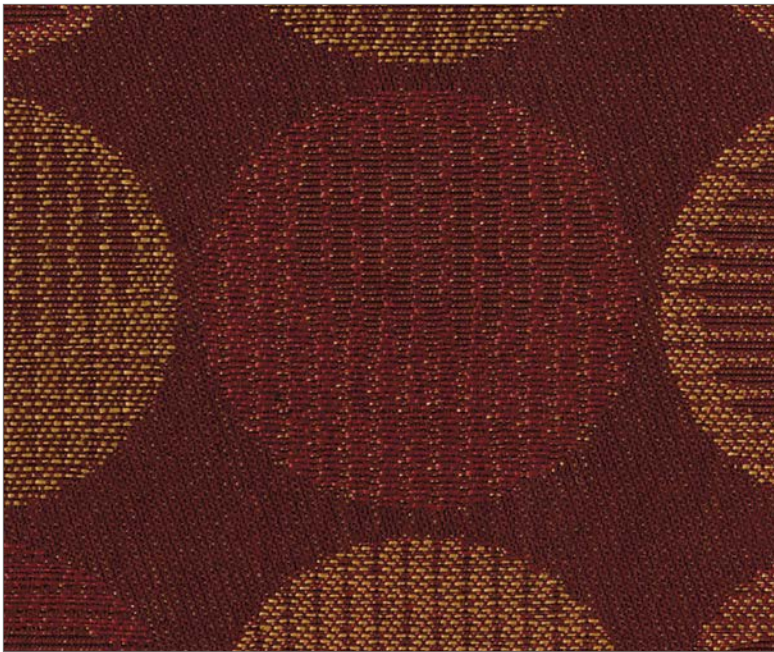
Cirque - Velvet Rose



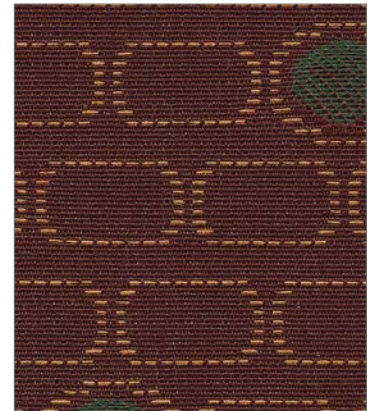
Trapeze - Regency Red



Prisma - Ruby



Roundabout - Red Barn



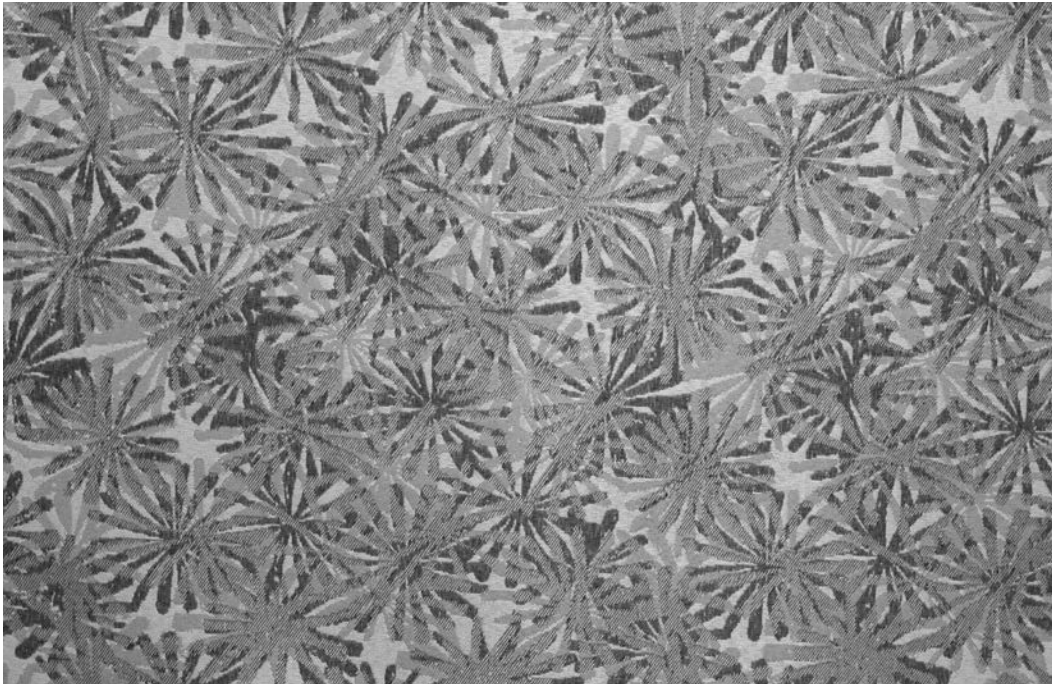
Lair - Burgundy



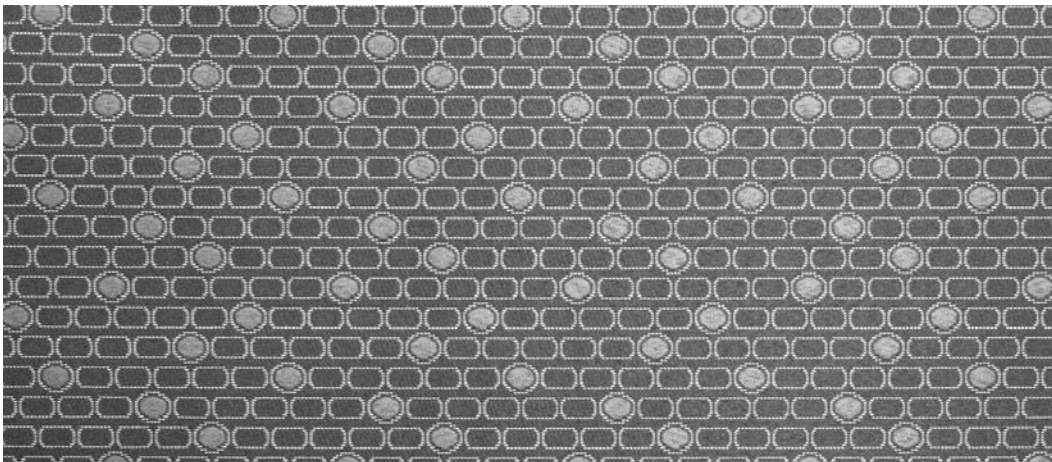
Linea - Patriot Red



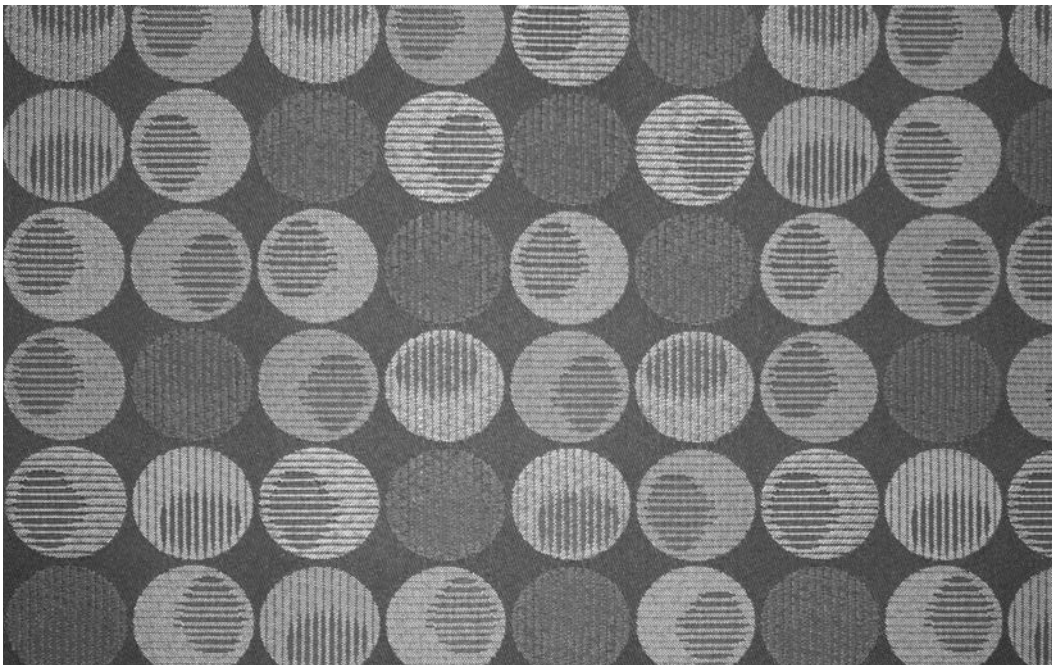
Sidestep - Red Rock



ASHBURY











LAIR



ROUNABOUT

## SPECIFICATIONS/PERFORMANCE

PATTERN/FIBER DIRECTION	FIBER	REPEAT	WEIGHT (±1 oz. per linear yard)	ABRASION ASTM-D-4157	COLORFASTNESS AATCC (Test Method 8)	LIGHTFASTNESS AATCC (Test Method 16E)	SEAM SLIPPAGE ASTM-4034
<b>ASHBURY</b> Suitable for Railroading 	100% Polyester	27" Horizontal 27" Vertical	13.5 oz.	100,000 Double Rubs	Wet: Class 4 Dry: Class 4.5	40 Hours Class 5	Warp: 110.0 lbs. Fill: 75.0 lbs.
<b>CIRQUE</b> Suitable for Railroading 	100% Polyester	3/4" Horizontal 3/4" Vertical	10.6 oz.	100,000 Double Rubs	Wet: Class 4 Dry: Class 4.5	40 Hours Class 5	Warp: 88.0 lbs. Fill: 60.0 lbs.
<b>LAIR</b> Suitable for Railroading 	100% Polyester	4 3/4" Horizontal 3 5/8" Vertical	12.0 oz.	100,000 Double Rubs	Wet: Class 4 Dry: Class 4.5	40 Hours Class 5	Warp: 100.0 lbs. Fill: 68.0 lbs.
<b>LINEA</b> Railroaded 	100% Polyester	2" Horizontal	12.1 oz.	100,000 Double Rubs	Wet: Class 4 Dry: Class 4.5	40 Hours Class 5	Warp: 102.0 lbs. Fill: 70.0 lbs.
<b>PRISMA</b> Suitable for Railroading 	100% Polyester	3 1/8" Horizontal 3 3/8" Vertical	10.5 oz.	100,000 Double Rubs	Wet: Class 4 Dry: Class 4.5	40 Hours Class 5	Warp: 92.5 lbs. Fill: 104.0 lbs.
<b>ROUNABOUT</b> Suitable for Railroading 	100% Polyester	14 1/8" Horizontal 14 1/8" Vertical	14.0 oz.	100,000 Double Rubs	Wet: Class 4 Dry: Class 4.5	40 Hours Class 5	Warp: 116.0 lbs. Fill: 79.0 lbs.
<b>SIDESTEP</b> Suitable for Railroading 	100% Polyester	None	13.8 oz.	100,000 Double Rubs	Wet: Class 4 Dry: Class 4.5	40 Hours Class 5	Warp: 114.0 lbs. Fill: 78.0 lbs.
<b>TRAPEZE</b> Suitable for Railroading 	100% Polyester	1 1/8" Horizontal 15/16" Vertical	13.2 oz.	80,000 Double Rubs	Wet: Class 4 Dry: Class 4.5	40 Hours Class 5	Warp: 110.0 lbs. Fill: 75.0 lbs.

## GENERAL SPECIFICATIONS

**WIDTH**  
54" (137-140 cm)

### CLEANING CODE - W

Spills can be easily wiped up with a clean, dry cloth. Most stains can be removed with water. If stain persists, simply make a paste using equal parts of an enzyme powder detergent (such as Tide® or Cheer®) and water. Apply to stain and allow to remain for one to five minutes. Scrub with a soft nylon brush and rinse well with clean water. Dry with a clean cloth.



### FLAME RESISTANCE

California Technical Bulletin 133  
(Cal TB 133 is a composite test. Our fabrics can meet this test when combined with the appropriate furniture components.)

California Technical Bulletin 117-2013

CS-191-53, Class 1

BIFMA X5.7-1991

NFPA 260-1989, Class 1

UFAC, Class 1

B.S. 5852 Part 1;  
(1979, Ignition Source 0; Smouldering Cigarette)

The finish used on the Presidio Collection is a highly engineered fabric treatment that provides outstanding protective features while retaining the original surface characteristics, breathability and hand.

The following properties ensure outstanding performance of these fabrics:

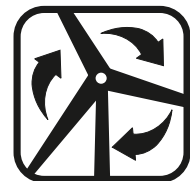
- Moisture Resistance
- Stain Resistance
- Abrasion Resistance
- Antimicrobial
- Water Repellency
- Durability
- Breathability
- Cleanability



FABRICS BY ABSECON MILLS, INC. • 4/2013

For A&D Style samples contact [samples@aanddstyle.com](mailto:samples@aanddstyle.com)

\*Presidio Collection is covered by a 5 year limited performance warranty. Contact your sales representative for written warranty terms and conditions.



WOVEN WITH WIND POWER