

# Rain or Shine II

COLLECTION

from Absecon Mills

HIGH UV INDOOR/OUTDOOR UPHOLSTERY FABRIC  
MAY 2021



*Refreshed Classics*

*Modern Appeal*

*Bold Brights*

*Comforting Neutrals*

*Timeless Textures*

*Designed for Open Living*

The Rain or Shine II collection will transform and compliment any environment with designs that provide comfort, structure and style. Offered in a variety of hues, from eye-catching brights to calming neutrals, each pattern invites you to mix, match, and layer!

Colors stay vivid with built-in UV protection and fade resistance; a perfect choice for both indoor and outdoor applications. The timeless patterns in this collection bring a lighthearted yet sophisticated attitude with modern appeal. Breezeway and Pavilion impart weave interest, depth and movement while Veranda and Market revitalize two classic stripe layouts. Mezzanine and Lanai supply a structural element to any space. These more engaging patterns are grounded by Haven and Abode. The subtle textures imply simplicity and easily transition season to season! These eight expertly curated, high performance fabrics are lightfast, stain resistant and bleach cleanable. Rain or Shine II offers versatility and durability for both indoor and outdoor living. No space is off limits!



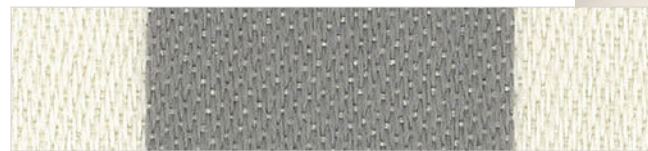
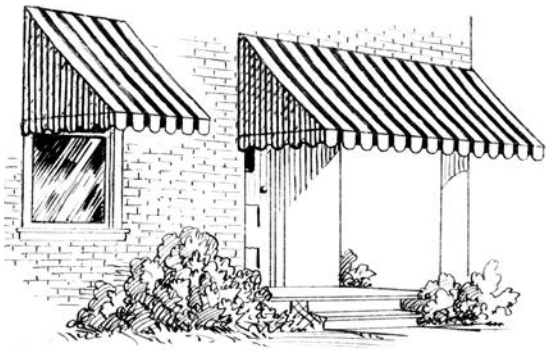
*For more information, please contact your sales representative:*

*www.absecon.com • 1-800-869-4550 (customer service department)*

# Veranda<sup>®</sup>

» The ultimate classic!

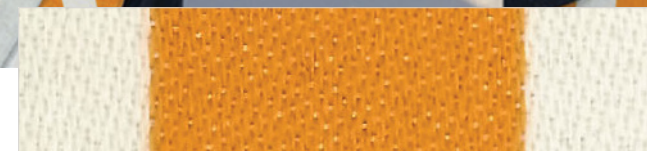
This timeless awning stripe, offered in an array of brights to comforting neutrals, will enhance the aesthetic of any space.



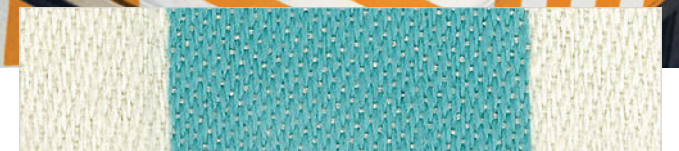
DOLPHIN



SAND



MELON



SPLASH



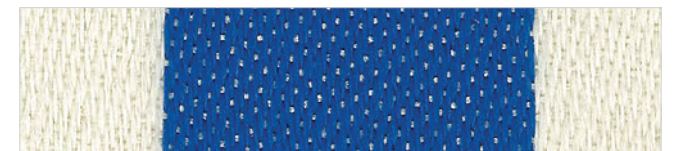
PEBBLE



SUNSHINE



CORAL



LAGUNA



MIDNIGHT



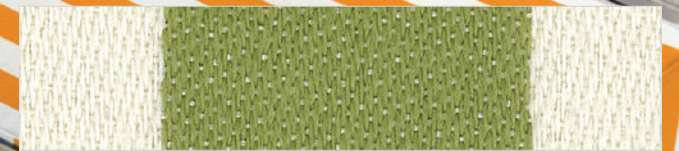
DUNE



POMEGRANATE



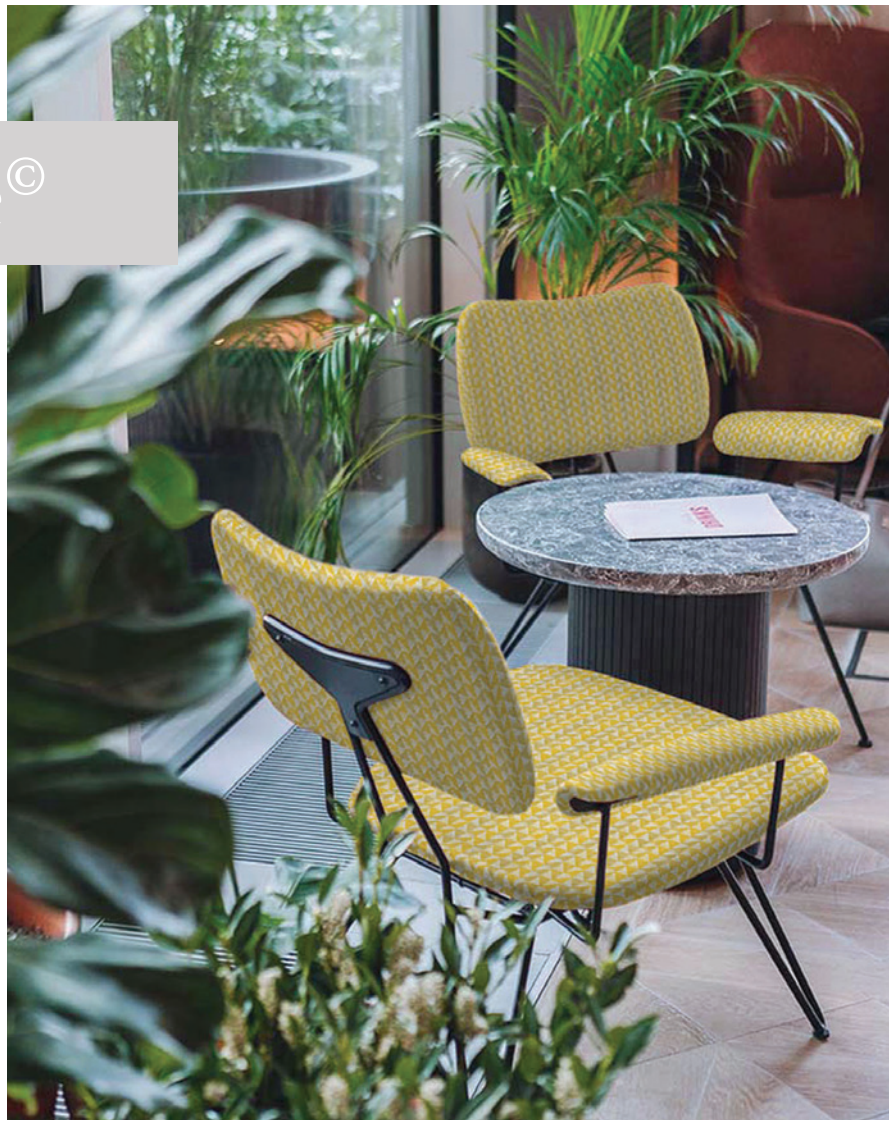
NAUTICAL



PALMETTO

# Mezzanine<sup>©</sup>

Influenced by the geometry used to study and divide space in modern architecture, Mezzanine is the perfect choice to provide structural appeal.



SANDCASTLE



STONE



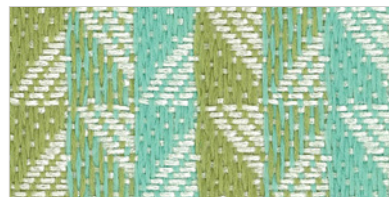
AMBER



SHADOW



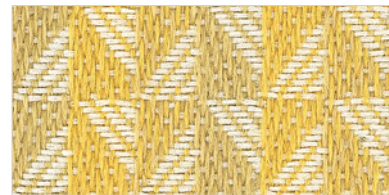
CITRONELLA



SEA BREEZE



BLUE JAY



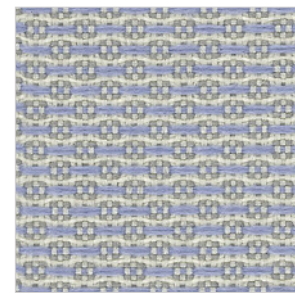
HONEYCOMB



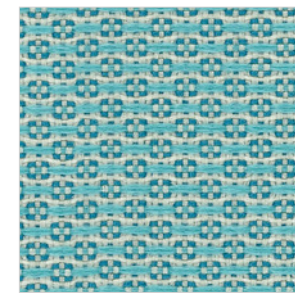
MANGO



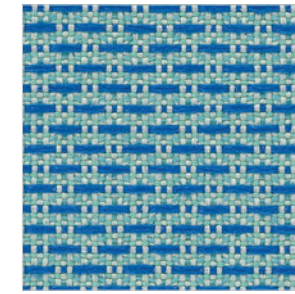
HIBISCUS



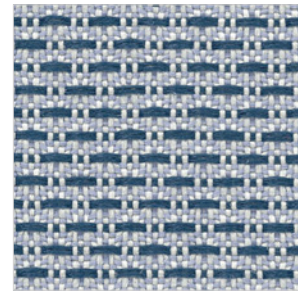
BREEZE



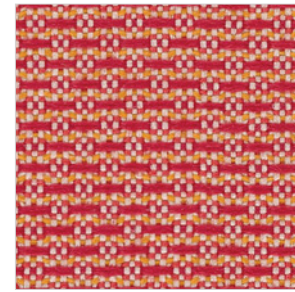
POOLSIDE



RIVIERA



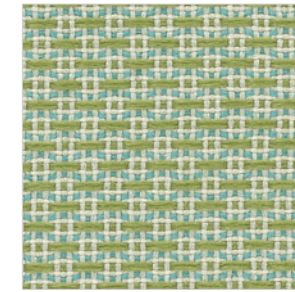
NAUTICAL



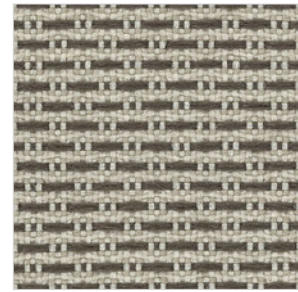
SIESTA



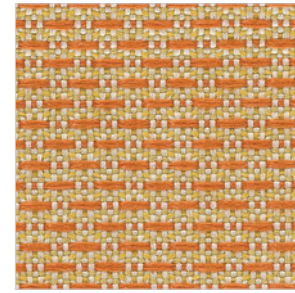
OYSTER



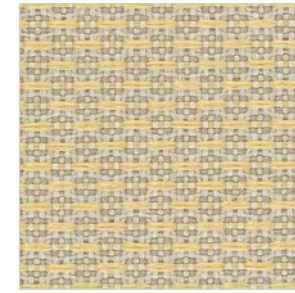
MOJITO



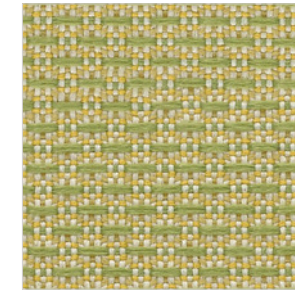
DUSK



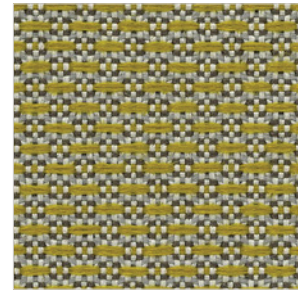
MIMOSA



SANDBAR



PALM TREE



SEAWEED

» The ideal texture that allows for the creation of a comforting place! Haven provides the feeling of relaxation, peace and tranquillity.

# Haven<sup>©</sup>



# Abode® & Market®



## Market®

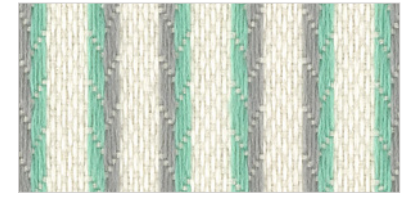
An engaging and revitalized spin on the classic ticking stripe!  
The strong, clean lines will perfectly accentuate any solid or texture.



OYSTER



DOLPHIN



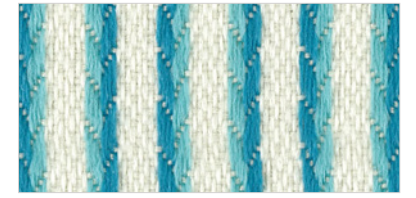
OASIS



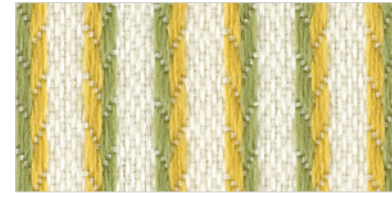
HONEYSUCKLE



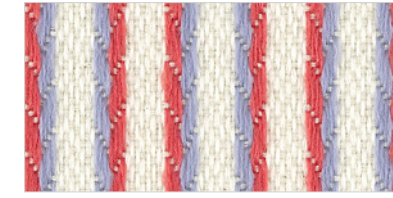
SEA BREEZE



AQUA BAY



CITRUS



AZALEA



SPRITZ



CITRONELLA



SUNSET



CARIBBEAN

» Abode is the quintessential texture that will be used time and time again!  
It can make a statement on its own or is easily paired as a simple accent.



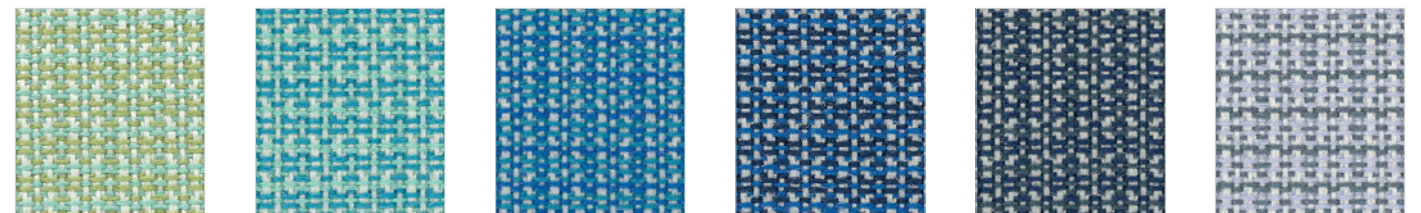
STORM ALABASTER TOPSAIL BISCUIT BUTTERCUP GOLDEN GLOW



NIGHTFALL SILVER MOON NUTMEG ICED TEA TOASTED SESAME PALM TREE



STARFISH FIRECRACKER CRIMSON PARFAIT POPSICLE



SPA DAY POOLSIDE SUMMER SKY BLUEPRINT DEEP INDIGO OVERCAST

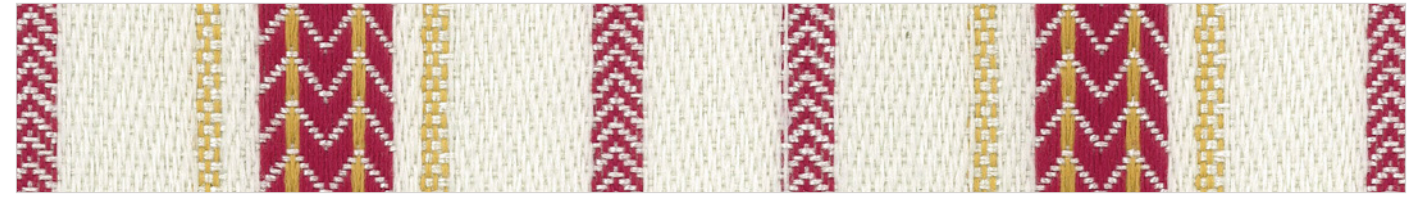
Abode®

# Pavilion<sup>®</sup>



## Pavilion<sup>®</sup>

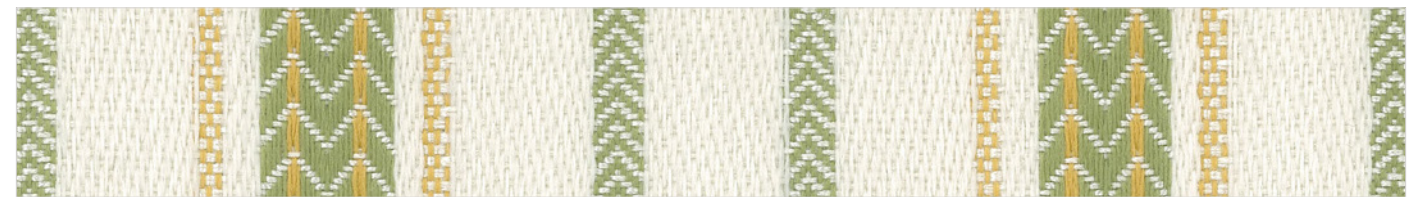
A decorative, symmetrical stripe with a time honored herringbone that offers weave interest and a sense of maturity.



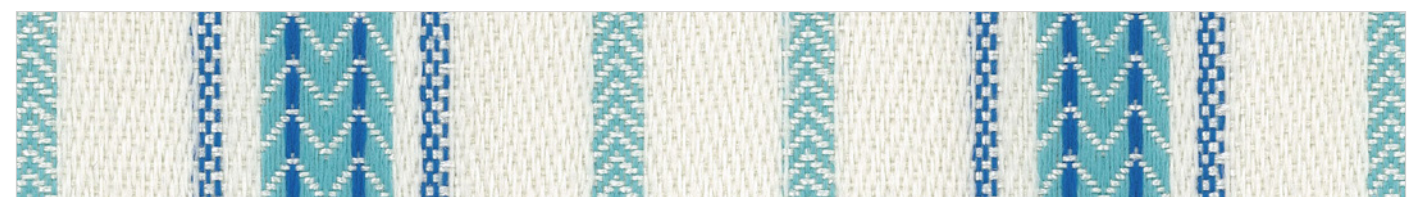
SANGRIA



MIMOSA



KEY LIME



POOLSIDE



NAUTICAL



PEBBLE



RATTAN

# Breezeway® & Lanai®

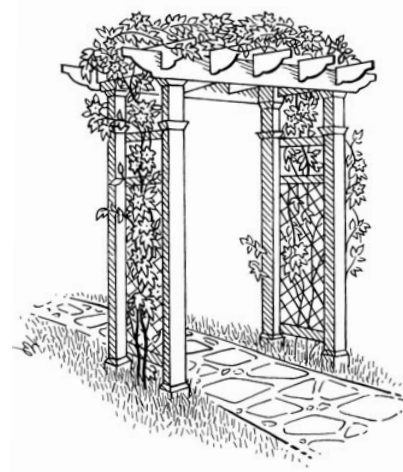


Reminiscent of beautiful paving stones used in exterior flooring, Lanai offers a delightful elegance in the form of structure and color.

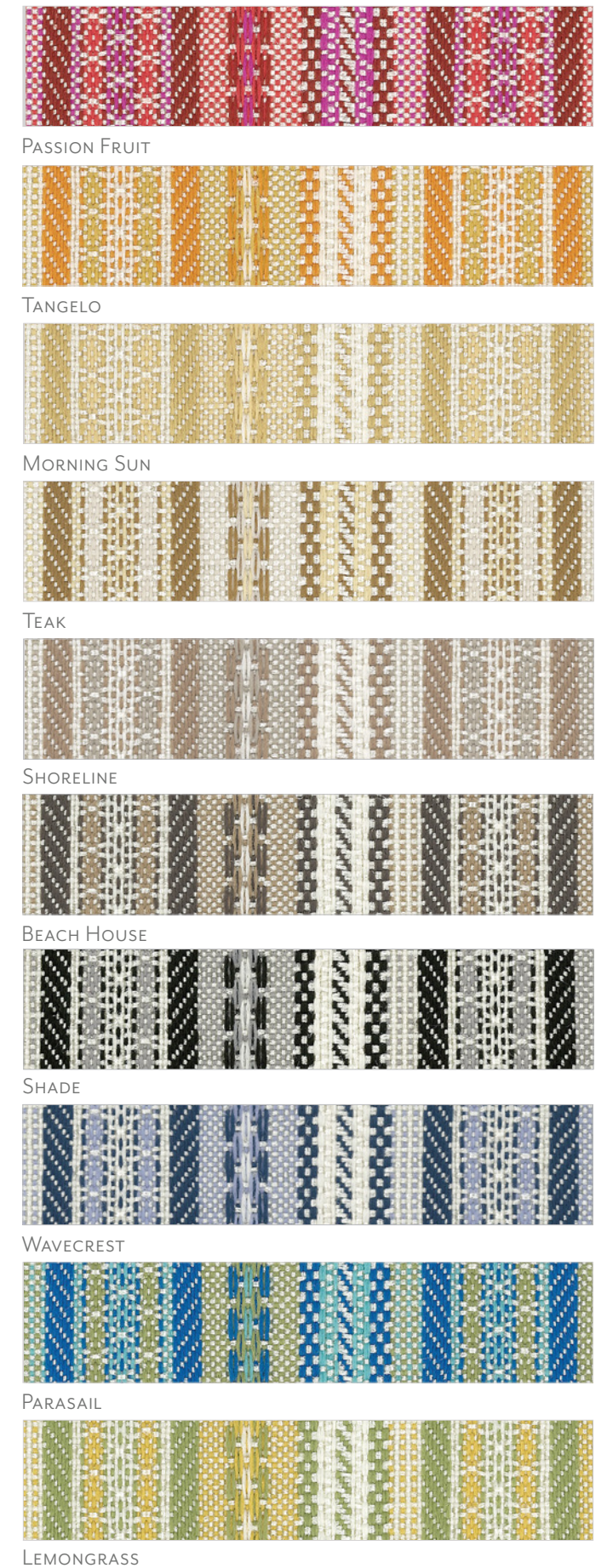


## Lanai®

➤➤ With its textural composition and casual arrangement of color, Breezeway provides a lighthearted yet sophisticated attitude in any environment.



## Breezeway®



# Rain or Shine II COLLECTION

5\* Patterns are covered by a 5 year limited performance warranty. Contact your sales representative for written warranty terms and conditions.

TECHNICAL INFORMATION								
Pattern/Direction Fabric width 54"	Fiber	Repeat	Backing & Finish	Weight (p/yard)	Abrasion ASTM 4157 (Double Rubs)	Lightfastness AATCC 16E	Colorfastness AATCC 8	Seam Slippage ASTM-D-4034
Abode (Up the roll)	61% High UV Polyester 39% High UV Polyolefin	1/4" H 3/16" V	Outdoor Acrylic with Stain Resist	14.0 oz.	125,000 (Cotton Duck)	1500 hours Class 4-4.5	Wet: Class 5 Dry: Class 5	Warp - 70 lbs Fill - 73 lbs
Breezeway (Railroaded)	60% High UV Polyester 40% High UV Polyolefin	2-1/4" H 1/4" V	Outdoor Acrylic with Stain Resist	14.6 oz.	125,000 (Cotton Duck)	1500 hours Class 4-4.5	Wet: Class 5 Dry: Class 5	Warp - 98 lbs Fill - 99 lbs
Haven (Up the roll)	62% High UV Polyester 38% High UV Polyolefin	1/4" H 1/4" V	Outdoor Acrylic with Stain Resist	15.9 oz.	125,000 (Cotton Duck)	1500 hours Class 4-4.5	Wet: Class 5 Dry: Class 5	Warp - 71 lbs Fill - 68 lbs
Lanai (Up the roll)	61% High UV Polyester 39% High UV Polyolefin	1/2" H 3/8" V	Outdoor Acrylic with Stain Resist	14.1 oz.	125,000 (Cotton Duck)	1500 hours Class 4-4.5	Wet: Class 5 Dry: Class 5	Warp - 75 lbs Fill - 77 lbs
Market (Railroaded)	62% High UV Polyester 38% High UV Polyolefin	3/4" H None V	Outdoor Acrylic with Stain Resist	14.4 oz.	125,000 (Cotton Duck)	1500 hours Class 4-4.5	Wet: Class 5 Dry: Class 5	Warp - 75 lbs Fill - 81 lbs
Mezzanine (Railroaded)	61% High UV Polyester 39% High UV Polyolefin	2" H 1/2" V	Outdoor Acrylic with Stain Resist	14.5 oz.	125,000 (Cotton Duck)	1500 hours Class 4-4.5	Wet: Class 5 Dry: Class 5	Warp - 80 lbs Fill - 85 lbs
Pavilion (Railroaded)	61% High UV Polyester 39% High UV Polyolefin	3-15/16" H 1/4" V	Outdoor Acrylic with Stain Resist	15.4 oz.	125,000 (Cotton Duck)	1500 hours Class 4-4.5	Wet: Class 5 Dry: Class 5	Warp - 73 lbs Fill - 82 lbs
Veranda (Railroaded)	61% High UV Polyester 39% High UV Polyolefin	3-7/8" H None V	Outdoor Acrylic with Stain Resist	13.9 oz.	125,000 (Cotton Duck)	1500 hours Class 4-4.5	Wet: Class 5 Dry: Class 5	Warp - 64 lbs Fill - 76 lbs

Cleaning Instructions: WS - For water based stains, use mild detergent foam or upholstery shampoo. For oil based stains, spot clean with a dry cleaning solvent, being sure to test area first.

Flame Resistance: California Technical Bulletin 117-2013, NFPA 260.

Fabrics by Absecon Mills, Inc. Fabric performance symbols indicate that a fabric performs to commercial furniture manufacturing standards and passes all applicable testing as specified by the Association for Contract Textiles (ACT).

5/2021 | For additional cards or memo samples:

email [samples@absecon.com](mailto:samples@absecon.com) or call 1-877-356-4557



HOSPITALITY



Absecon Mills is focused on being a responsible corporate entity and we are continually striving to find ways to help preserve our environment, increase energy efficiency and reduce waste. Our mode of manufacturing is specifically designed to prevent damage to the environment. Our products are woven using wind power and many are constructed with polypropylene (a by-product of gasoline manufacturing, utilizing post-industrial waste) and recycled polyester, which helps keep post-consumer waste in the material stream and out of landfills. Absecon

offers finishes that use ten times less fluorocarbons than conventional finishes and are SCS Indoor Advantage Gold certified. We participate in a fabric recycling program and work hard to lessen our footprint on the environment. For more information on our green initiatives, please visit [www.absecon.com](http://www.absecon.com)



WOVEN WITH  
WIND POWER

Colors may vary slightly from dye lot to dye lot.

\*ASTM-D-4034: Seam 12mm from edge using 7 stitches per 25mm (1"), plain lock stitch and a 22 ballpoint needle)



*Please note that the fabrics in this brochure are digital representations and colors may vary from actual fabric.*