

FEATURING...

WARP SPEED® » **IN STOCK**  
for quick delivery!



## *Sherpa & Shire* »

*Sherpa & Shire have been the hallmark of durability and cleanability since their inception. Cited by Interior Design magazine for their longevity as the best of the past 25 years, these fabrics are nearly impervious to damage.*

---

UPHOLSTERY FABRIC **LL\***  
100% Marquésa Lana®

**Marquésa**   
**Lana**®

\* Covered by a Limited Lifetime performance warranty.

**Sherpa & Shire** *Marquésa Lana polyolefin is an environmentally friendly product that entails a mode of manufacturing that not only prevents damage to the environment, but actually reduces the carbon footprint by utilizing waste products from gasoline manufacturing. It is a byproduct of post-industrial waste and its manufacture produces no waste product.*



*Sherpa Whisper*



*Sherpa Aquatint*



*Sherpa Spa Blue*



*Sherpa Teal*



*Sherpa Barnyard*



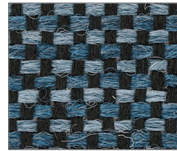
*Sherpa Mocha*



*Sherpa Zinc*



*Sherpa Overcast*



*Sherpa Blue Belt*



*Sherpa Bondi Blue*



*Sherpa Turquoise*



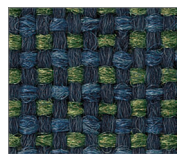
*Sherpa Concrete*



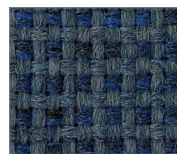
*Sherpa Alloy*



*Sherpa Blue Heather*



*Sherpa Mariner*



*Sherpa Commodore*



*Sherpa Cordon Bleu*



*Sherpa Farmhouse*



*Sherpa Shadow*



*Sherpa Denim*



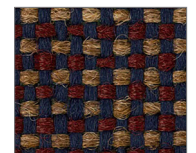
*Sherpa Chesapeake*



*Sherpa Bluejay*



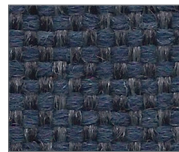
*Sherpa Viola*



*Sherpa Country*



*Sherpa Dark Night*



*Sherpa Gettysburg*



*Sherpa Delft Blue*



*Sherpa Special Blue*



*Sherpa Grey Lilac*



*Sherpa Purple Velvet*

WARP SPEED® **IN STOCK**  
for quick delivery!

*In our continuing efforts to provide you with the best service and quickest delivery, our most in-demand Sherpa and Shire colors are now in our Warp Speed® In Stock program.*



*Sherpa Black Marble*



*Sherpa Ink*



*Sherpa Keydet Blue*



*Sherpa Academy Blue*



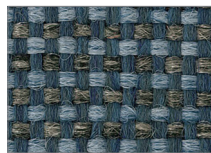
*Sherpa Indigo*



*Sherpa Greystone*



*Sherpa Merrimac*



*Sherpa Steel Blue*



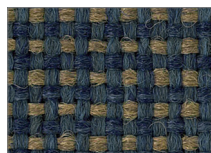
*Sherpa Midnight*



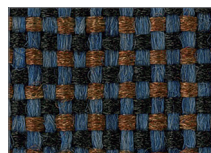
*Sherpa Dark Blue*



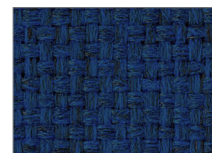
*Sherpa Grey Mix*



*Sherpa Tuscan Blue*



*Sherpa Titan Blue*



*Sherpa Royal*



*Sherpa Navy*

*Its built in resistance to staining and wear eliminates the need for after market stain resistant finishes. It is recyclable and is unique in its utilization of conservation methods from inception to disposal.*

**Marquésa**   
**Lana**®



Shire Neutral



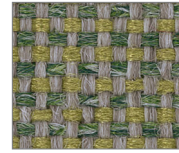
Sherpa Amber



Shire Cider



Shire Sage



Shire Sprite



Shire Horizon



Sherpa Gargoyle



Shire Blair Brown



Shire Acorn



Shire Dill



Shire Vintage Green



Sherpa Jade



Shire French Rose



Shire Koala



Sherpa Snappy



Sherpa Tortoise



Shire Pesto



Shire Verde



Shire Black Cherry



Shire Bricktown



Shire Cameo



Shire Woodstock



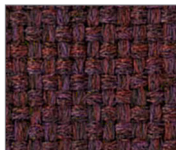
Sherpa Ivy League



Sherpa Hunter



Sherpa Concord



Sherpa Grape



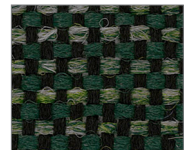
Sherpa Coffee



Shire Aqueduct



Sherpa Billiard

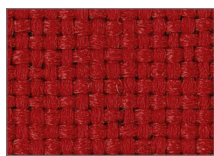


Shire Library Green

*We have carefully analyzed the popularity of the colors, and the resultant winners are represented here and are all available for immediate shipment. Only the items below the line are in the Warp Speed® Program.*



Shire Ascot



Sherpa Cardinal



Shire Travertine



Shire Sesame



Sherpa Grey Heather



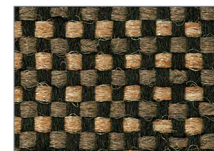
Shire Red Rose



Sherpa Scarlet



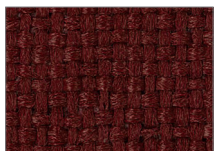
Sherpa Brown Haze



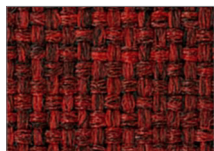
Shire Hopsack



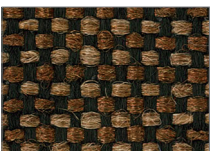
Shire Fossil



Sherpa Maroon



Sherpa Garnet



Shire Espresso



Shire Stonewall



Sherpa Black

# Sherpa & Shire UPHOLSTERY FABRIC

LL\*

Patterns are covered by a limited lifetime performance warranty. Contact your sales representative for written warranty terms and conditions.

## TECHNICAL INFORMATION

**Fiber:** 100% Marquésa Lana®

**Backing | Finish:** Acrylic

**Abrasion Resistance:** 250,000 double rubs (wire screen)

**Weight:** 16.0 ounces per linear yard (±1 oz.); 494 g/m

**Width:** 54" (137-140 cm)

**Repeat:** None (Pattern is woven up the roll and suitable for railloading)

**Lightfastness:** 400 Hours, Class 5

**Colorfastness:** Wet - Class 5 | Dry - Class 5

**Seam Slippage:** Warp - 91 lbs | Fill - 95 lbs.

**Cleaning Instructions:** WS - For water-based stains, use mild detergent foam or upholstery shampoo. For oil based stains, spot clean fabric with a dry cleaning solvent, being sure to test area first.

**Flame Resistance:** California Technical Bulletin 117-2013; NFPA 260

This pattern does not contain fire retardant additives.

## ABSECON

Fabrics by Absecon Mills, Inc.  
[www.absecon.com](http://www.absecon.com)

06/2022 | For additional cards or memo samples:

email [samples@absecon.com](mailto:samples@absecon.com)



ACADEMIC



CORPORATE



HEALTHCARE



HOSPITALITY



TRANSPORT



WORSHIP



Absecon Mills is focused on being a responsible corporate entity and we are continually striving to find ways to help preserve our environment, increase energy efficiency and reduce waste. Our mode of manufacturing is specifically designed to prevent damage to the environment. Our products are woven using wind power and many are constructed with polypropylene (a by-product of gasoline manufacturing, utilizing post-industrial waste) and recycled polyester, which helps keep post-consumer waste in the material stream and out of landfills. Absecon offers finishes that use ten times

less fluorocarbons than conventional finishes and are SCS Indoor Advantage Gold certified. We participate in a fabric recycling program and work hard to lessen our footprint on the environment. For more information on our green initiatives, please visit [www.absecon.com](http://www.absecon.com).



WOVEN WITH  
WIND POWER

Colors may vary slightly from dye lot to dye lot.

\*ASTM-D-4034: Seam 12mm from edge using 7 stitches per 25mm (1"), plain lock stitch and a 22 ballpoint needle)

