

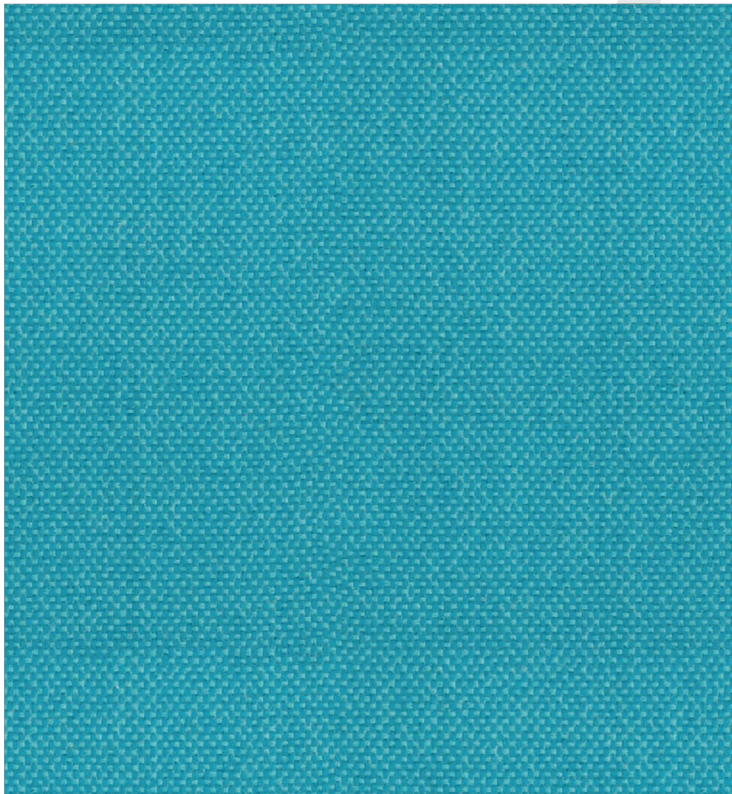


INDOOR
OUTDOOR

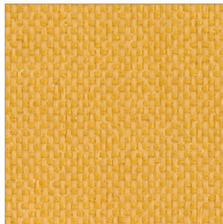
Shore Thing[®]

INDOOR/OUTDOOR UPHOLSTERY FABRIC
100% High-UV Polyester

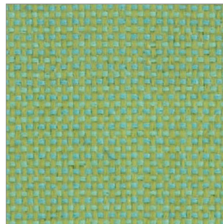
5*



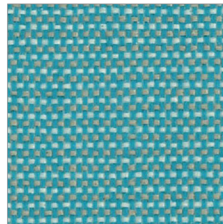
AQUA



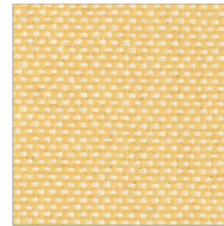
SUNSHINE



MEADOW



SKY



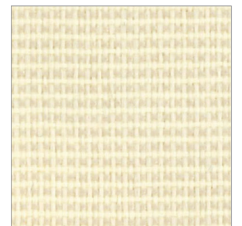
WHEAT



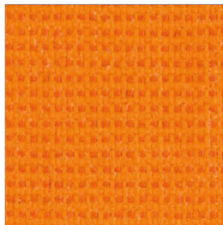
SEASHELL



DUNE



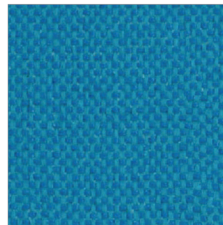
SAND DOLLAR



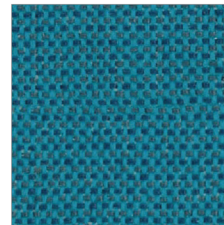
MELON



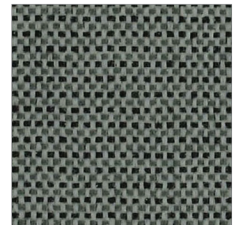
PALM



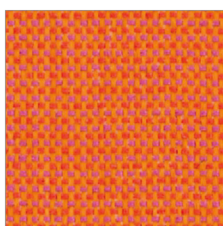
RIVIERA



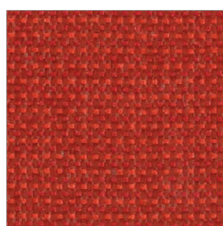
DARK TEAL



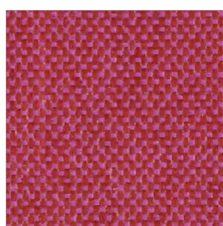
SLATE



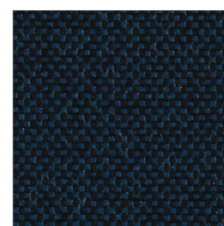
FIESTA



POPPY



BLOOM



MIDNIGHT



BLACK

* Covered by a 5 year limited performance warranty

Shore Thing[®] UPHOLSTERY FABRIC

5* Pattern is covered by a 5 year limited performance warranty. Contact your sales representative for written warranty terms and conditions.

TECHNICAL INFORMATION

Fiber: 100% High-UV Polyester

Backing | Finish: Outdoor Acrylic with Stain Repellent

A Abrasion Resistance: 250,000 double rubs (cotton duck)

Weight: 12.4 ounces per linear yard (383 g/m)

Width: 54" (137-140 cm)

Repeat: None (Pattern is woven up the roll and suitable for railroading)

☀ Lightfastness: 1500 Hours, Class 4-4.5

♥ Colorfastness: Wet - Class 5 | Dry - Class 5

★ Seam Slippage*: Warp - 82 lbs | Fill - 94 lbs.

Cleaning Instructions: WS - For water based stains, use mild detergent foam or upholstery shampoo. For oil based stains, spot clean with a dry cleaning solvent being sure to test area first.

🔥 Flame Resistance: California Technical Bulletin 117-2013; NFPA 260

Fabric performance symbols indicate that a fabric performs to commercial furniture manufacturing standards and passes all applicable testing as specified by the Association for Contract Textiles (ACT).

ABSECON

Fabrics by Absecon Mills, Inc.

02/2024 | For additional cards or memo samples:

email samples@absecon.com or call 1-877-356-4557



Absecon Mills is focused on being a responsible corporate entity and we are continually striving to find ways to help preserve our environment, increase energy efficiency and reduce waste. Our mode of manufacturing is specifically designed to prevent damage to the environment. Our products are woven using wind power and many are constructed with polypropylene (a by-product of gasoline manufacturing, utilizing post-industrial waste) and recycled polyester, which helps keep post-consumer waste in the material stream and out of landfills. Absecon offers finishes that use ten times less fluorocarbons than conventional finishes and are SCS Indoor Advantage Gold certified. We participate in a fabric recycling program and work hard to lessen our footprint on the environment. For more information on our green initiatives, please visit www.absecon.com



WOVEN WITH WIND POWER

Colors may vary slightly from dye lot to dye lot.

*ASTM-D-4034: Seam 12mm from edge using 7 stitches per 25mm (1"), plain lock stitch and a 22 ballpoint needle)



PFAS FREE